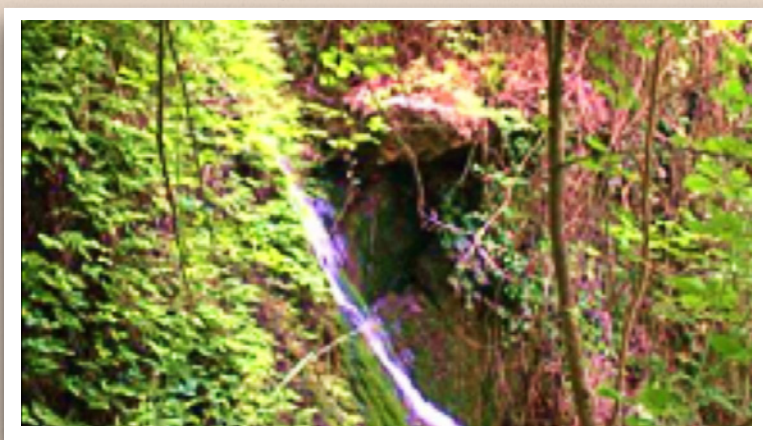




# THE SOURCES

Just out of Caldes to the west, we leave first Gorg d'en Pèlags and its spring, right after Falsa Fountain and Noeretes Fountain, down Guanta to Font del Bou, back to Caldes through Torre Roja Iberian village, leaving Xec and Escales Fountains. This trail goes by half a dozen fountains, some of them very lost, the drop is high and part of this trail is repeated coming and going.



*Gorg d'En Pèlags*

INFO



LENGTH: 15,07 Km



DURATION: 2 h 47 min



ELEVATION GAIN UPHILL: 512 m



ELEVATION GAIN DOWNHILL: 587 m



CIRCULAR ROUTE: NO



ELEVATION MAX: 551 m

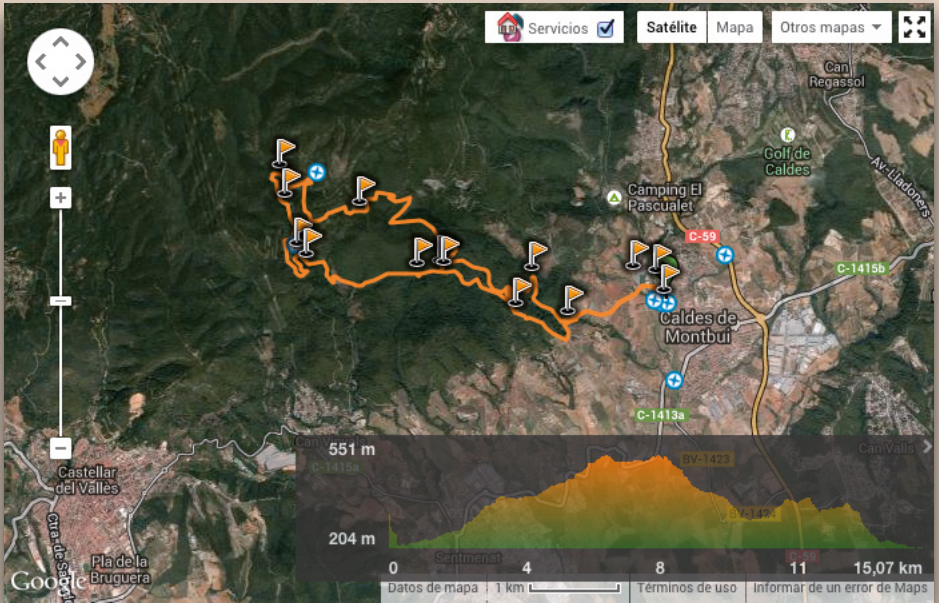


ELEVATION MIN: 204 m



DIFFICULTY: \*\*\* (moderate)

<http://en.wikiloc.com/wikiloc/view.do?id=712945>



KM	ALTITUDE	DESCRIPTION	PARTIAL	TOTAL
0,000	205	We leave Font del Lleó Square, following the same walk as the PR C9, taking the Pont Street, by the backside of Broquetas Hotel Spa.	00:00	00:00
0,224	200	The Romanesque bridge is crossed, passing to the other side of the Caldes Stream.	00:03	00:03
0,380	210	At Taunusstein Square we take on the left path to Can Picanyol, following the PR C9 marks.	00:03	00:06
0,570	220	A path joins us on the left, coming from el Pinatar.	00:02	00:08
0,675	215	We leave a crossing on the right, and further on we leave Can Picanyol at left side.	00:01	00:09
1,100	230	Crossing. We continue by the trail coming from the left.	00:05	00:14
1,300	230	The trail takes us to a wider path that we take on the right, in a strong climbing. Before the path going down to the Escalles Fountain, we take the way back.	00:02	00:16
1,430	240	We arrive to a small bench where we leave temporarily the PR to continue the path on the right, to Gorg d'en Pèlags. It is marked with white points.	00:03	00:19
1,610	260	We take the path from the left, flatter than the one climbing on the right.	00:03	00:22
1,790	250	We cross by the stream going down to Gorg d'en Pèlags.	00:03	00:25
1,925	270	We leave the path that goes flat and we take a small trail on the left.	00:05	00:30
2,085	285	Small bench and glade. Before us the gorg d'en pèlags with the waterfall, and on the left the GORG SPRING. We take the path climbing by the stones and go over the spring. IT IS IMPORTANT TO NOT TO LEAVE THE PATH BECAUSE THE SHOOTING RANGE IS NEARBY.	00:04	00:34
2,150	305	We take again the path on the left to arrive to a glade by a flat and wide path.	00:02	00:37
2,300	305	We take up again the path following the PR, and we go up by the right. We follow the PR yellow and white marks and the main path, we reach Collet del Català.	00:02	00:39
3,850	390	Once in Collet del Català we take the first path on the right, to St. Sebastià by the PR C9.	00:23	01:02
4,165	385	Passing at right by a path to Pascol, we turn left with a tough ascent and always following the PR.	00:04	01:06
5,745	520	The path goes by a wide track coming from the right side of the St. Sebastià road. We turn left by this track.	00:29	01:35
6,185	535	After arriving to a crossing where we will leave the PR C9 that on the right would climb to St. Sebastià by Pic del Vent Hill, and we go on straight on by the same track to Sentmenat by the PR C48.	00:07	01:42
6,270	530	Después de pasar una cadena llegamos a un cruce de calles sin pavimentar pertenecientes a la urbanización de Guanta. Seguimos por el que sale justo enfrente de nosotros, sin dejar las marcas del PR C48.	00:02	01:44

KM	ALTITUDE	DESCRIPTION	PARTIAL	TOTAL
6,570	505	We leave the PR that goes by the left and we go up by the one on the right.	00:04	01:48
7,895	520	On the right side of the path we can observe some stones with travertine remains and just after a track climbing up to FONT FALSA, which is 50 m away from the path.	00:17	02:05
7,995	505	The residential area way ends and we keep by the track on the left, to Guanta stream, just after we will cross. We follow the yellow and white marks now from the PR C48.	00:24	02:09
8,340	440	We cross again, twice, the mountain stream.	00:09	02:18
8,415	435	FONT DE LES NOERETES. The path takes us to this fountain, generally with considerable flow. We continue by the marked path on the left.	00:03	02:21
8,500	430	We walk out to a residential area downwards to the right.	00:05	02:26
8,920	405	Guanta's House is on our left. We keep going down by the main track.	00:05	02:31
9,465	380	BEWARE!! After passing two paths on the right from the Guanta's House we take the track on the left, it is not quite visible. We do not follow the PR marks anymore.	00:07	02:38
9,905	330	The track brings us to the valley to reach again the stream of Guanta, but before we find an ancient lime oven and just after it, we reach the Guanta's waterfall underneath.	00:10	02:48
10,005	325	We walk along a bit by the stream bed, usually dry or with little water and just after we reach a path on the left.	00:03	02:51
10,045	330	We take the path on the right, downwards.	00:03	02:54
10,150	305	We cross the waterfall and we arrive to FONT DEL BOU.	00:02	02:56
10,245	305	We leave the path on the left.	00:03	02:59
10,605	310	We come to a landscape and we go first to the left and some metres forward we turn by the path on the right, between some olive trees.	00:03	03:02
10,970	310	Before arriving to Can Senosa House, we take a track that climbs to the left side.	00:06	03:08
11,280	365	We get a wide track and go to the right.	00:07	03:15
11,385	370	We are at Pla de les Absoltes, and take the left path following the PR C48,3 marks, to Can Fruïtòs Mountain.	00:02	03:17
11,735	370	FONT DEL XEC detour is on the right, 50 m under the path. We go by the main path.	00:06	03:23
11,985	390	We are again at Collet del Català and we get the path to Caldes following the PR C9.	00:03	03:26
12,885	370	After leaving the path to Pascol we find on the right a path to Torre Roja. We stop following the PR C9 marks.	00:13	03:39
13,265	375	After finding an Iberian village ruins we arrive to Torre Roja from where we can enjoy a great view. We go down to Caldes by a track coming behind the tour.	00:05	03:44

KM	ALTITUDE	DESCRIPTION	PARTIAL	TOTAL
13,755	275	We arrive to a wide track and continue always downwards reaching the ancient Roure Gros (Big Oak).	00:08	03:52
14,105	235	In a sharp curve to the left we take a track on the right, quite hidden, that take us to a stairs going down.	00:05	03:57
14,185	220	FONT DE LES ESCALES.	00:04	04:01
14,235	230	We go out from a crossway and take the first fatter face to us. It is the same where we started the tour.	00:02	04:03
15,585	205	Following this path we arrive again to the first houses of Caldes by the soccer field and from here to the Lleó fountain, the end of the route.	00:16	04:19



Carretera BV-1243 a Sant Sebastià de Montmajor km 0,3

T (34) 938 654 695 • F (34) 938 667 580

08140 Caldes de Montbui

GPS: 41° 38' 39" / 2° 9' 23"

[elpasqualet@elpasqualet.com](mailto:elpasqualet@elpasqualet.com)

[www.facebook.com/CampingelPasqualet](https://www.facebook.com/CampingelPasqualet)

[www.twitter.com/elpasqualet](https://www.twitter.com/elpasqualet)

[www.elpasqualet.com](http://www.elpasqualet.com)

OPEN FROM 15 JANUARY TO 15 DECEMBER