



# “EL MORRO DE PORC I ELS FORNS DE CALÇ”

This path, created on last year 2002, visits our more exceptional viewpoints of Caldes environment: Casuc Hill. This hill is over Morro de Porc, from we have a wonderful view with panorama of Sant Feliu de Codines, Montseny and Cingles de Bertí. The route goes close to ancient ruins of lime kilns situated in Farell Mountain.

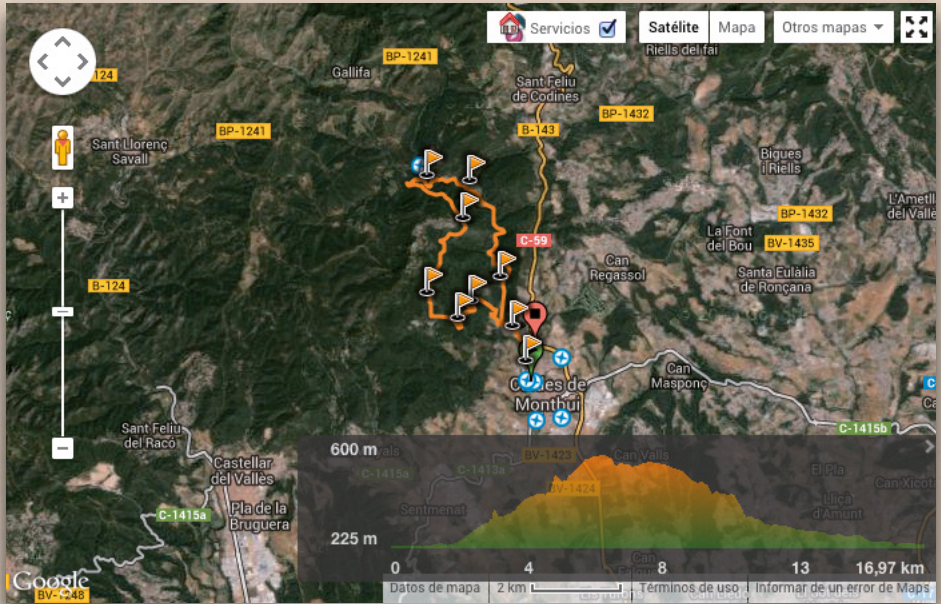


*Old lime kiln*

## INFO

-  **LENGHT:** 16,97 Km
-  **DURATION:** 2 h 52 min
-  **ELEVATION GAIN UPHILL:** 496 m
-  **ELEVATION GAIN DOWNHILL:** 525 m
-  **CIRCULAR ROUTE:** NO
-  **ELEVATION MAX:** 600 m
-  **ELEVATION MIN:** 225 m
-  **DIFFICULTY:** \*\*\* (moderate)

<http://en.wikiloc.com/wikiloc/view.do?id=712935>



## POINTS OF INTEREST

CORRIOI:  $41^{\circ} 644728' 2,1433420''$   
TURÓ DEL CASSUC:  $41^{\circ} 663847' 2,1448450''$   
EL CASSUC VELL:  $41^{\circ} 672108' 2,1355750''$   
FONT DEL REI:  $41^{\circ} 671185' 2,1465610''$   
EL CASTELLVELL:  $41^{\circ} 652837' 2,1542620''$



KM	ALTITUDE	DESCRIPTION	PARTIAL	TOTAL
0,000	205	We start from Font del Lleó, Vic street, Marquès de Caldes Square (or Cargol Square –snail square-), Raval del Remei, Remei Avenue until the hermitage. We follow the road to Sant Feliu de Codines, and after, on the left, we take the road to Sant Sebastià.	00:00	00:00
1,300	240	Passing by Camping Pasqualet, we keep the roadway crossing the Pascol Bridge. After the bridge we take the path at right to Torre Nova.	00:15	00:15
2,100	300	We follow the forest track, which starts rising slightly. Approximately 300 meters further we find a crossing of three paths and it is necessary to choose that one of the right, initially it is flat but just afterwards we will find that it starts going up.	00:03	00:18
3,200	360	In the curve at right there is the start of a path on the left that goes slightly down and it has to be followed. A bit further between the trees, on our left side there is Torre Nova.	00:22	00:40
3,900	370	We turn off by a path on the right that slopes upwards between the pines, just when the track that we follow starts descending, after a bend on the right.	00:10	00:50
4,300	430	We follow the wider path on the right. Do not take the one on the left.	00:05	00:55
4,500	440	We find olive trees while we keep climbing and we arrive to a shack on the right, to the named Guerxo Vineyard. Few steps up we will see a beautiful view of Torre Nova and Cingles de Bertí on the back.	00:05	01:00
4,900	450	We arrive to the Farell new road, and we cross it and take the path just starting before. Just some meters after the path should be taken on the right climbing under the masts of an electric power line. CAUTION, the path is not quite visible.	00:05	01:05
5,300	530	We arrive to the top of the hill, on the right there is a beautiful viewpoint, we keep forward to the electric power line. The path keeps up and down following the edge of the mountain.	00:10	01:15
6,100	560	We reach Farell old road. We continue the road 50 metres approx. On the left and before the curve we reach a track on the right, following again the electric power line.	00:15	01:30
6,500	600	The path is slightly easier, just at a trail up on the right (coming from FORNS DE CALÇ –lime ovens- downwards). The electric power line runs parallel to the path that must be followed although it is not quite trod. There is a path to be passed by on the left more marked.	00:10	01:40
6,900	605	We follow the line of the electric power transmission line until crossing the telephone supply line. We descend the paved road, and we continue on the left. Some meters on the right there is a forest track closed with a chain that we follow to the Morro de Porc.	00:10	01:50
7,500	580	After the chain, the track goes slightly down before arriving to a sharp bend on the right, on the left side of the track, we see ruins of two old ice wells. We are just on top of the Morro de Porc.	00:05	01:55
8,200	580	Casuc Hill. Excellent view: a bright day we see almost the coastline and the Pyrenees. We follow the descending track.	00:15	02:10

KM	ALTITUDE	DESCRIPTION	PARTIAL	TOTAL
9,800	490	We leave the wide track and we take a path on the right, descending with a strong unevenness. This path can be followed by the white painted signals. The forest track starts to climb slightly.	00:20	02:30
10,200	440	The track becomes wider further on the right.	00:10	02:40
10,600	450	The path ends in a round glade, and we take the starting point of a path just in front of us. Les Helles House can already be distinguished downwards.	00:10	02:50
10,800	450	We leave a dried torrent and we take the path on the left, descending by the side of a ruined house, always with the torrent at our left side without ever crossing it.	00:05	02:55
11,400	325	Les Elles House. We cross Caldes stream and we find a wide track passing by the house side. We keep the right. From this point, it has to be followed the PR C-91 white and yellow marks taking us to Caldes.	00:10	03:05
12,800	310	After leaving a farm house on our left, we turn to the path on the right, beside a very big stone.	00:15	03:20
13,700	280	We go along the edge of the stream, sometimes passing across it.	00:15	03:35
15,500	245	On the left of the path there is Castellvell de la Pedrera house, a bit further on, the path is covered by cobbles, because it was the ancient way to the quarry.	00:30	04:05
16,700	240	Reaching the Caldes road to Sant Sebastià, we follow it on the left and come back by the Camping el Pasqualet side, and now we only need to come back by the same returning way.	00:20	04:25
17,900	205	After descending by the Remei Avenue, Marqués de Caldes Square (or Cargol Square), Vic Street, we arrive again to the Font del Lleó Square.	00:20	04:45



Carretera BV-1243 a Sant Sebastià de Montmajor km 0,3

T (34) 938 654 695 • F (34) 938 667 580

08140 Caldes de Montbui

GPS: 41° 38' 39" / 2° 9' 23"

[elpasqualet@elpasqualet.com](mailto:elpasqualet@elpasqualet.com)

[www.facebook.com/CampingelPasqualet](http://www.facebook.com/CampingelPasqualet)

[www.twitter.com/elpasqualet](http://www.twitter.com/elpasqualet)

[www.elpasqualet.com](http://www.elpasqualet.com)

OPEN FROM 15 JANUARY TO 15 DECEMBER