



PR-C 9.1

It's a circular trail following PR-C 9 bases but it's not necessary to step backward to Caldes. Once we have arrived to the so-called "Gorg de les Elies" through PR-C9, instead of climbing to Sta. Mffi del Grau we can come back to Caldes, along the stream. We will go through Caldes ancient stone quarry. Where, by late nineteen century, thousand of flagstones carried by heavy carriages pulled out by draught oxen to the village train station. They were taken to Barcelona and other places by railway.



Gorg de les Elies

INFO



LENGTH: 6,99 Km



DURATION: 1 h 14 min



ELEVATION GAIN UPHILL: 33 m



ELEVATION GAIN DOWNHILL: 154 m



CIRCULAR ROUTE: NO



ELEVATION MAX: 349 m

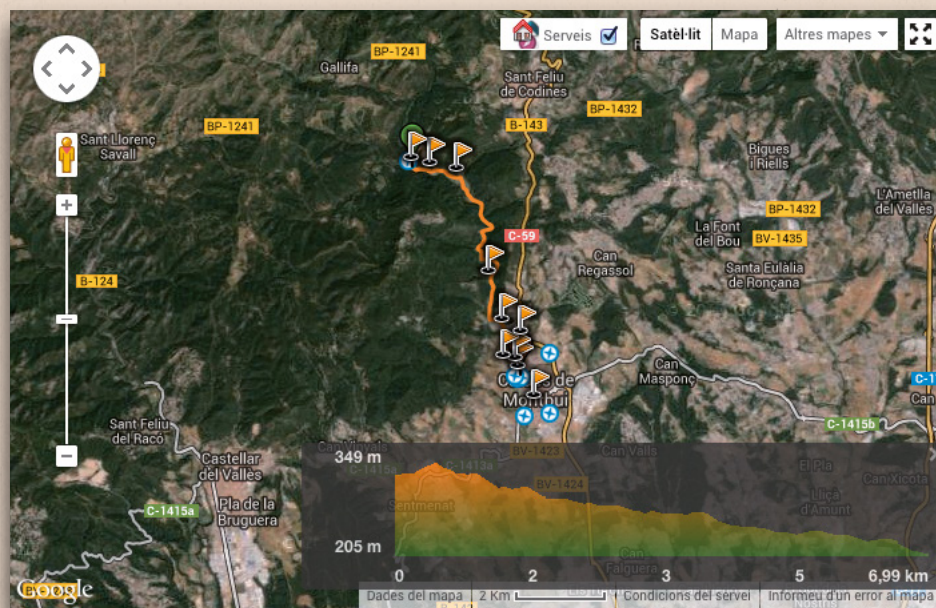


ELEVATION MIN: 205 m



DIFFICULTY: *** (easy)

<http://en.wikiloc.com/wikiloc/view.do?id=1372918>



POINTS OF INTEREST

ERMITA DEL REMEI: 41° 64'14.09" 2,1624250"

CAMPING EL PASQUALET: 41° 64'35.52" 2,1578450"

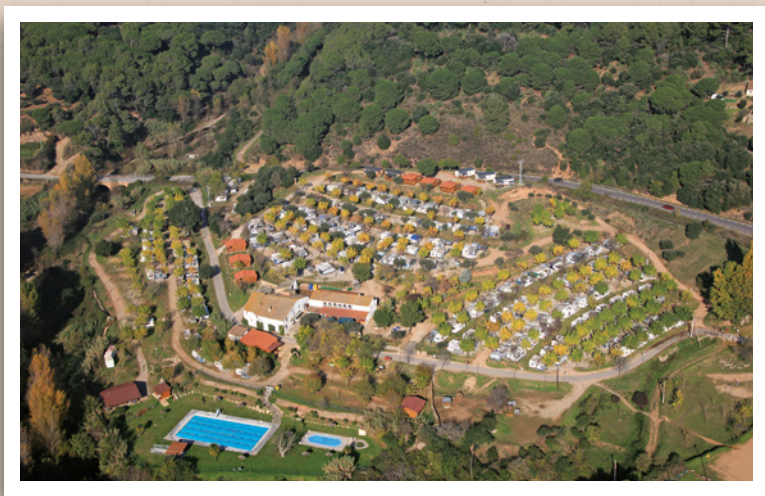
CASTELLVELL: 41° 65'28.37" 2,1542620"

CASANOVA DE LES ELIES: 41° 67'27.64" 2,1459670"

CADA DE LES ELIES: 41° 67'36.58" 2,1392040"

PONT DE LA RIERA DE CALDES : 41° 67'46.57" 2,1342680"

KM	ALTITUDE	DESCRIPTION	PARTIAL	TOTAL
0,00	335	We cross the Elies Stream and keep the stream course down.	00:00	00:00
0,250	335	We leave the path at left that leads directly up to the El Fonoll Restaurant.	00:04	00:04
0,317	340	Fork. Keep right descending. The path that comes from right drive us to St. Feliu de Codines.	00:01	00:05
0,460	335	We find Elies House at right.	00:03	00:08
1,075	330	At left there is the Elies Casa Nova.	00:08	00:16
1,195	320	Next to a big stone at right, a way starts and it will drive us to a small dam.	00:02	00:18
1,360	310	We cross the torrent following the small stones visible thanks to the small dam that allows us to find again the path.	00:02	00:20
1,410	310	We leave behind a path that comes from the right side and we continue straight.	00:01	00:21
1,690	310	The path forms into a curve at left upwards, but we remain on the way that goes to the south, downward.	00:04	00:25
2,210	290	We quit from the first part of the paving alongside the stream and we get into a woodland, running off the way on the left.	00:08	00:32
2,490	285	We come back to the river-bed and follow by the stones, and always by left side river, for arriving to the canes at our left, there, we will get into a small track.	00:04	00:36
3,110	270	We go across the stream by a small bridge built quite handmade.	00:10	00:46
3,290	265	We find a bridge project structure that it was supposed to cross the stream. We take the starting on the left side of the stream path.	00:03	00:49
3,650	265	We discover on our left side a quite ruined building supposed to be used as accommodation block for ancient quarry workers.	00:06	00:55
4,450	245	On the left side of the path, we notice Castellvell House from the Quarry. We get away the path starting on the right.	00:12	01:07
5,280	230	We arrive to the road from Caldes to St. Sebastià, after walking a part of a path with fruit spurs that use to be the ancient quarry path. We follow the road asphalted to the left.	00:17	01:24
5,680	240	At right, we find the entrance of "El Pasqualet" Camping.	00:04	01:28
5,960	240	We get the road of Caldes to St. Feliu de Codines and turn right to Caldes.	00:04	01:32
6,165	225	At left we observe the Mare de Deu del Remei Hermitage, traditional gathering place for people from Caldes. We keep going down through the Remei boulevard where there is an overall view of Farell Mountain.	00:02	01:34
6,530	220	We take the Remei suburb street at right.	00:04	01:38
6,700	210	We reach the Cargol Square, and passing through it we take Vic Street.	00:03	01:41
6,980	205	Passing ahead of Broquetas Spa gardens, we reach again Font del Lleó Square.	00:03	01:44



Camping El Pasqualet



Carretera BV-1243 a Sant Sebastià de Montmajor km 0,3

T (34) 938 654 695 • F (34) 938 667 580

08140 Caldes de Montbui

GPS: 41° 38' 39" / 2° 9' 23"

elpasqualet@elpasqualet.com

www.facebook.com/CampingElPasqualet

www.twitter.com/elpasqualet

www.elpasqualet.com

OPEN FROM 15 JANUARY TO 15 DECEMBER