



PR-C 9

GR-5 runs close to Caldes that meets Canet de Mar and Sitges by the inside line. PR-C9 is a short trail that meets Caldes with this GR-5 at Santa Maria del Grau Chapel. From Serra Llisa we can be astonished at the wonderful panorama or stop us at Sant Sebastià de Montmajor.



Santa Maria del Grau hermitage

INFO



LENGTH: 14,2 Km



DURATION: 3 h 52 min



ELEVATION GAIN UPHILL: 704 m



ELEVATION GAIN DOWNHILL: 481 m



CIRCULAR ROUTE: NO



ELEVATION MAX: 700 m

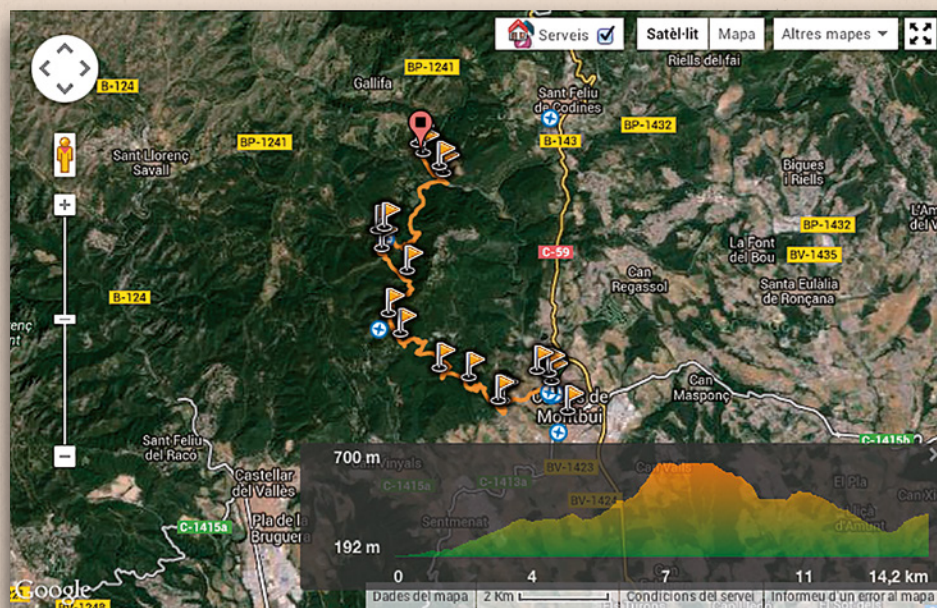


ELEVATION MIN: 192 m



DIFFICULTY: **** (moderate)

<http://en.wikiloc.com/wikiloc/view.do?id=1372937>



POINTS OF INTEREST

APARCAMENT ESTACIÓ DE BUS: 41° 628946' 2,166163"

APARCAMENT ZONA ESPORTIVA: 41° 63677' 2,157995"

SANT MIQUEL DE L'ARN: 41° 631075' 2,157995"

CAMÍ DE LA TORRE ROJA: 41° 635333' 2,1406"

COLLET DEL CATALÀ: 41° 6373' 2,133033"

ALZINA DE LES TUIES: 41° 643897' 2,122938"

SERRA LLISA: 41° 647764' 2,120139"

OBAGA DEL FARELL: 41° 655946' 2,124786"

DESVIAMENT: 41° 660465' 2,11847"

TORRE DEL RELLOTGE: 41° 663638' 2,117141"

PONT DE LA RIERA: 41° 674589' 2,134101"

GORG DE LES ELIES: 41° 676077' 2,132983"

SANTA MARIA DEL GRAU : 41° 678463' 2,129019"

KM	ALTITUDE	DESCRIPTION	PARTIAL	TOTAL
0,00	205	Font del Lleó Square is the starting point of this path; take Pont Street, behind Broquetas Hotel Spa. <i>Historical note</i> PLAÇA DE LA FONT DEL LLEÓ <i>The name of this square is due to the fountain, built up in 1581 and renewed in 1822 and in 1927, nineteenth-century style. Water flows continuously at a temperature of 70ºF being one of the highest in the Iberian Peninsula. The spring of water comes out from the mouth of a lion's head. The last restoration was made by the second modernist generation architect Manel Raspell (1877-1937) and by the sculptor E. Arnau. Formerly it was named Escaldadors Fountain referring to the wickers' boilers.</i> TERMES ROMANES <i>The Roman Thermal Baths' Building was built up during 1st century B.C. - I A.D. The current thermal baths are only a slight part of the big thermal building from the Empire Period. Until XIV cent., they were used as a swimming thermal pool and they were know as common baths. Above thermal baths it was built up a construction demolished in 1956, it exposed them to their current state. Restoration lasted a year and it was inaugurated in June, 9th 1957.</i> CARRER DEL PONT <i>Pont Street is already dated from 1311. A document from 1563 indicates that, at that time, it was know as "Vulpsegura".</i>	00:00	00:00
0,224	200	Cross the Roman Bridge to arrive to the other side of the Caldes' Stream. <i>Historical note</i> PONT ROMÀNIC <i>Its ancient written documentation dates from year 1226. It seems that it was built on the XIII century with latest changes. Romanesque style, it uses the structure and location of a precious bridge probably Roman which now it only remains the central pillar base and maybe part of the left side.</i>	00:03	00:03
0,380	210	Once in Taunusstein Square (twinned German village with Caldes de Montbui), take the path on the left to Can Picanyol.	00:03	00:06
0,570	220	On the left there is a joining path coming from Pinatar.	00:02	00:08
0,675	215	We leave a deviation on the right and ahead, on the left, we find Can Pincanyol going under a high voltage power electric line; we continue through the forest, between fields and orchards.	00:01	00:09
1,100	230	Fork. We follow by the path on the left side	00:05	00:14
1,300	230	Before taking the slope in the forest, we pass a path on the left that, going down and crossing the stream, drive us to Escales Fountain and it can be followed upstairs, making a path that join us again to the main track, further on.	00:02	00:16

KM	ALTITUDE	DESCRIPTION	PARTIAL	TOTAL
1,430	240	On the right, we leave behind the start of the Gorg d'en Pèlacs by-pass, a very interesting visit, but we divert to a main path. It returns to the main path at km 2,530. The points are marked in white colour but we must be careful because it walks off close to a shooting camp. <i>Historical note</i> PONT ROMÀNIC <i>The origin of the pool name refers to a Latin expression from 1340: "loco vocato Pelech cubertrac". It's a dive from Codonys river, below the farmhouse Pascol.</i>	00:03	00:19
1,560	245	To the left, in a clearing, there is a joining path coming from Escales fountain.	00:02	00:21
1,750	250	After a regular uphill we arrive to an important road junction where it was the Roure Gros (Big Oak) and in front of us we see a big plain that reaches Palau de Plegamans and Sentmenat. At this point our path branches off from the GR 97.2 and it drives us to Torre Marimon connected to GR 97 (Sant Celoni-La Beguda Alta). To follow our path we turn right passing under a high power line. <i>Historical note</i> EL ROURE GROS <i>The Roure Gros from Can Corre was situated between Corro farmhouse and the Sentmenat Thermal. It was the biggest around.</i>	00:03	00:24
1,865	265	On the left there are the ancient St. Miquel dels Arcs (or l'Arn) Chapel ruins, dated already in 1027. Then, we leave a trail on the left and we take the path to the forest, climbing the Torre Roja hill.	00:02	00:26
2,530	305	At a turn to the right by-pass coming from Gorg d'en Pèlacs	00:08	00:34
3,170	365	On the left we leave a fork up to the Torre Roja hill, where we can visit an Iberian Village Ruins and from an old surveillance tower where we can enjoy a plain beautiful view. <i>Historical note</i> LA TORRE ROJA <i>Torre Roja's earliest reference comes from year 1529. The original name of this fortified hill was Puig Castellar. In the hill (which rises to 393 m. above sea level) there is a big archaeological site with vestiges from the IV century b.C. to I a.C. Thanks to its location the hill inhabitants controlled perfectly the way through Caldes Stream.</i>	00:08	00:42
3,575	385	Pascol fork. We leave the path on the right. Pascol farmhouse existed already in the 13th century (as "Paschal") and it's called Mas Pascual in 1353 or Mas Pascual de Rovinyó from the 15th century.	00:05	00:47
4,075	390	The path goes up and down slightly. There is a fork leftward to Can Fruitós. After a climb and following curves we arrive to the Català Hill. We take the path, and it makes turn 180° on the right. At this position, we find the PR C48.3 junction -(Setmenat-Gallifa).	00:06	00:53
4,387	385	We leave leftward another path that goes to Pascol, turning left to a tough ascent.	00:04	00:57
4,640	405	We leave a path on the left and an ascent turning to the right.	00:03	01:00

KM	ALTITUDE	DESCRIPTION	PARTIAL	TOTAL
5,565	460	We arrive to a small plane with a good view of the old quarry ruins. We continue forward to the north, leaving a stream on the left side, uphill and curves.	00:08	01:08
5,970	520	The path joins a wider track coming from the right side of Sant Sebastià road. We turn left by this track.	00:07	01:15
6,410	535	The track, after a slight ascent and descent drives us to a road in Guanta residential state, passing near an old destroyed hut. We leave the track to take the path from the right side hill-walking. The path matches with PR-C48 from Gallifa to Sentmenat.	00:08	01:23
6,510	545	We leave the track to take a path on the left, starting just under an oak at Tuies Oak which it stands out because its greatness. Oak Tuies is the name which people from Sentmenat call Son Oak; the name comes from Can Tuies, Sentmenat, where they use to have a vineyard.	00:02	01:25
7,120	695	From the oak way, the path arrives scarcely to the called Serra Llisa Summit once in Farell Mountain. Our way follows a wide path coming from the left and going down. On its right there is a path for the Pic del Vent, the highest point in Farell Mountain, marked as a PR C-9,2 bypass. <i>Historical note</i> LA SERRA LLISSA <i>Serra Llisa is the southern part of Farell summit. It's often said that this is the mountain's point to be firstly snowy.</i> EL FARELL <i>The Farell was a tower near its Montmajor lifts, it's called Farell (from Latin "Pharum" or in diminutive "pharellum") where monitoring was made and they warned of danger with light signals. In a document from year 1065 there is named a place of Barcelona county in which there is an "allodium... Qui afrontat... De meridie in ipsa torre de far... (an allodial that borders south with Farell Tower). A privilege of 1167 from Barcelona Count allows to build up a farmhouse on the mountain's summit ("it ipso Farello", so called already in year 1067).</i>	00:17	01:42
7,625	680	Fork. We leave the path left side and follow St. Sebastià de Montmajor summit.	00:06	01:48
7,755	695	On the right, in the middle of the path, we see the entrance of a small chasm.	00:02	01:50
8,490	695	We arrive to a large plain headed by a big oak where a path on the right coming from Farell guesthouse join us, located on the mountain ridge and visible from all the valley. Between this way and the one that has brought us down a path coming from Pic del Vent and that links the bypass passed on Llisa Mountain. We follow towards St. Sebastià by the left path.	00:08	01:58
8,560	690	Fork; we follow the right.	00:02	02:00
8,835	650	Toward the right and from our way there is a track branching off that go back and down to the Caldes to St. Sebastià road.	00:03	02:03
8,865	645	Fork. We keep toward the right, following the Cargols ridge, so called because the molluscs richness, a bit further down Prat farmhouse mountain near to the way to la Riereta.	00:02	02:05

KM	ALTITUDE	DESCRIPTION	PARTIAL	TOTAL
9,281	620	We arrive to another levelled area, with an holm-oak in the middle. There is a path cross. We take the path on the right side going down directly to Saint Sebastià de Montmajor by a ruined path by water and motorbikes, and with a strong unevenness.	00:10	02:15
9,900	500	We arrive to a path, after leaving on the left Torre del Rellotge which we will follow to the right for reaching our destination to St. Sebastià de Montmajor place. Towards left we follow the PR C-48 we would go to Gallifa Castle.	00:20	02:35
10,085	505	<p>We arrive to Sant Sebastià de Montmajor.</p> <p><i>Apunte històric</i></p> <p>SANT SEBASTIÀ DE MONTMAJOR</p> <p><i>Sant Sebastià de Montmajor is a small village of Caldes de Montbui, already dated from 1098. The allodium bellowed to St. Cugat del Vallès in 1098. St. Sebastià Chappel, Romanesque style has a unique vault barrel nave, without sub-arches, with a wide square apse at the same high, very odd, sticked outside with arcades and Lombard bands. The transept has semicircular absidioles to the north and one lateral to the East, framed by lesenes and arch friezes and blind arches friezes.</i></p> <p><i>Over the crossing lies the bell tower, square floor and two levels, the lower floor with simple windows and the higher floor with double windows. The commemorations in St. Sebastià honour are very ancient and for sure, they had been set for the previous epidemics, because the congregation felt that the martyr had been shot as the person who kept them away the plague. In the past, the celebration was held on January the 20th, but from the thirties, it's celebrated the first of may, the same day as the Labour Day Party.</i></p> <p><i>St. Sebastià Church is because its features one of the Catalonia Romanesque jewels, and it has been chosen for its reproduction in Poble Espanyol in Montjuic.</i></p>	00:10	02:45
10,370	500	We arrive to a path going up to a small reliefs passing through a big esplanade of grass.	00:05	02:50
10,995	545	The path goes to a track from a road, fit for vehicles. We continue toward the left, sloping down the trail.	00:08	02:58
11,266	535	Fork. We keep the same path on the left with a strong descent.	00:02	03:00
11,470	515	<p>We move to the farm side called "El Ginestós" (Can Martin).</p> <p><i>Apunte històric</i></p> <p>EL GINESTÓS</p> <p><i>Ginestós Farm is already dated in 1316 ("mansí Genestos"), and it was known as "Mas Ginestós de la Vila" from 19th century. It was added to St. Sebastià parish church in 1868.</i></p>	00:04	03:04
12,015	460	On the left we find the way coming from St. Sebastià, currently closed.	00:03	03:07
12,420	430	Entrance to Ginestós Farm. After leaving the track that drives us to the farm, we will go away from the main path in order to take a passage on the left.	00:08	03:15
12,610	410	We come back to find the main path and we keep descending.	00:02	03:17

KM	ALTITUDE	DESCRIPTION	PARTIAL	TOTAL
12,831	385	Two new paths come from the left: one from Casa de la Vila (Village Townhall) and the other one from Sant Sebastià. <i>Historical note</i> CASA DE LA VILA <i>The name of the village has been taken from Gallifa parish, as formerly it used to belong to, and since 1565, it was named as "Casa de la Vila" and belonging to St. Sebastià parish since 1868.</i>	00:02	03:19
13,415	335	We cross Elies stream by the current concrete bridge. At the end, when it is plentiful water, it can be observed the Elies pool. We leave at right the wide path that goes from Elies house and comes back to Caldes setting up the PR C-9.1 road, then, we take left. <i>Historical note</i> LES ELIES <i>Elies House is dated already in 1353 ("lo mas de ses Alies dez cabots"). The farm has set the name to the site, the pool and the stream, designated also to Gallifa and Caldes.</i>	00:08	03:27
13,660	335	Going to Elies Pool we pass through some abandoned fields to cross the stream, just in front of the stream.	00:03	03:30
13,720	340	We take the path to the rock in the middle of two streams, by a climbing path and quite weathered.	00:02	03:32
13,840	365	In a very sharp bend, at right, in front of us, we see a path direct to Sant Sebastià marked as PR C-48.2. We follow at right going up.	00:04	03:36
13,970	385	We reach a track, we take left.	00:05	03:41
14,300	410	After leaving a pine forest we arrive to Sta. Maria del Grau Hermitage, where it's also retained an ancient tower and a ruined building	00:04	03:45
14,570	420	A very short distance, arriving to an esplanade by the same way, we will find finally the G.R.-5, where is made a way triangle.	00:05	03:50



Carretera BV-1243 a Sant Sebastià de Montmajor km 0,3

T (34) 938 654 695 • F (34) 938 667 580

08140 Caldes de Montbui

GPS: 41° 38' 39" / 2° 9' 23"

elpasqualet@elpasqualet.com

www.facebook.com/CampingelPasqualet

www.twitter.com/elpasqualet

www.elpasqualet.com

OPEN FROM 15 JANUARY TO 15 DECEMBER