



PR-C 9

GR-5 runs close to Caldes that meets Canet de Mar and Sitges by the inside line. PR-C9 is a short trail that meets Caldes with this GR-5 at Santa Maria del Grau Chapel. From Serra Llisa we can be astonished at the wonderful panorama or stop us at Sant Sebastià de Montmajor.



Santa Maria del Grau hermitage

INFO



LENGTH: 14,2 Km



DURATION: 3 h 52 min



ELEVATION GAIN UPHILL: 704 m



ELEVATION GAIN DOWNHILL: 481 m



CIRCULAR ROUTE: NO



ELEVATION MAX: 700 m

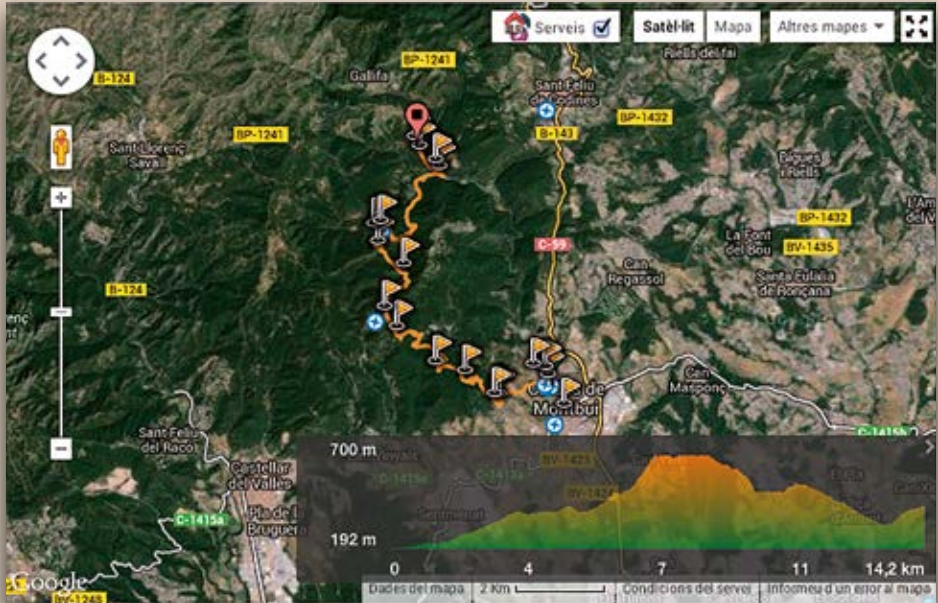


ELEVATION MIN: 192 m



DIFFICULTY: ***** (moderate)

<http://en.wikiloc.com/wikiloc/view.do?id=1372937>



POINTS OF INTEREST

APARCAMENT ESTACIÓ DE BUS: 41° 628946' 2,166163"

APARCAMENT ZONA ESPORTIVA: 41° 63677' 2,157995"

SANT MIQUEL DE L'ARN: 41° 631075' 2,157995"

CAMÍ DE LA TORRE ROJA: 41° 635333' 2,1406"

COLLET DEL CATALÀ: 41° 6373' 2,133033"

ALZINA DE LES TUIES: 41° 643897' 2,122938"

SERRA LLISA: 41° 647764' 2,120139"

OBAGA DEL FARELL: 41° 655946' 2,124786"

DESVIAMENT: 41° 660465' 2,11847"

TORRE DEL RELLOTGE: 41° 663638' 2,117141"

PONT DE LA RIERA: 41° 674589' 2,134101"

GORG DE LES ELIES: 41° 676077' 2,132983"

SANTA MARIA DEL GRAU : 41° 678463' 2,129019"

KM	ALTITUDE	DESCRIPTION	PARTIAL	TOTAL
0,00	205	<p>Font del Lleó Square is the starting point of this path; take Pont Street, behind Broquetas Hotel Spa.</p> <p><i>Historical note</i> PLAÇA DE LA FONT DEL LLEÓ <i>The name of this square is due to the fountain, built up in 1581 and renewed in 1822 and in 1927, nineteenth-century style. Water flows continuously at a temperature of 70ºF being one of the highest in the Iberian Peninsula. The spring of water comes out from the mouth of a lion's head. The last restoration was made by the second modernist generation architect Manel Raspell (1877-1937) and by the sculptor E. Arnau. Formerly it was named Escaldadors Fountain referring to the wickers' boilers.</i></p> <p>TERMES ROMANES <i>The Roman Thermal Baths' Building was built up during 1st century B.C. - I A.D. The current thermal baths are only a slight part of the big thermal building from the Empire Period. Until XIV cent., they were used as a swimming thermal pool and they were know as common baths. Above thermal baths it was built up a construction demolished in 1956, it exposed them to their current state. Restoration lasted a year and it was inaugurated in June, 9th 1957.</i></p> <p>CARRER DEL PONT <i>Pont Street is already dated from 1311. A document from 1563 indicates that, at that time, it was know as "Vulpsegura".</i></p>	00:00	00:00
0,224	200	<p>Cross the Roman Bridge to arrive to the other side of the Caldes' Stream.</p> <p><i>Historical note</i> PONT ROMÀNIC <i>Its ancient written documentation dates from year 1226. It seems that it was built on the XIII century with latest changes. Romanesque style, it uses the structure and location of a precious bridge probably Roman which now it only remains the central pillar base and maybe part of the left side.</i></p>	00:03	00:03
0,380	210	Once in Taunusstein Square (twinned German village with Caldes de Montbui), take the path on the left to Can Picanyol.	00:03	00:06
0,570	220	On the left there is a joining path coming from Pinatar.	00:02	00:08
0,675	215	We leave a deviation on the right and ahead, on the left, we find Can Pincanyol going under a high voltage power electric line; we continue through the forest, between fields and orchards.	00:01	00:09
1,100	230	Fork. We follow by the path on the left side	00:05	00:14
1,300	230	Before taking the slope in the forest, we pass a path on the left that, going down and crossing the stream, drive us to Escales Fountain and it can be followed upstairs, making a path that join us again to the main track, further on.	00:02	00:16

KM	ALTITUDE	DESCRIPTION	PARTIAL	TOTAL
1,430	240	On the right, we leave behind the start of the Gorg d'en Pèlags by-pass, a very interesting visit, but we divert to a main path. It returns to the main path at km 2,530. The points are marked in white colour but we must be careful because it walks off close to a shooting camp. <i>Historical note</i> PONT ROMÀNIC <i>The origin of the pool name refers to a Latin expression from 1340: "loco vocato Pelech cubertrac". It's a dive from Codonys river, below the farmhouse Pascol.</i>	00:03	00:19
1,560	245	To the left, in a clearing, there is a joining path coming from Escales fountain.	00:02	00:21
1,750	250	After a regular uphill we arrive to an important road junction where it was the Roure Gros (Big Oak) and in front of us we see a big plain that reaches Palau de Plegamans and Sentmenat. At this point our path branches off from the GR 97.2 and it drives us to Torre Marimon connected to GR 97 (Sant Celoni-La Beguda Alta). To follow our path we turn right passing under a high power line. <i>Historical note</i> EL ROURE GROS <i>The Roure Gros from Can Corre was situated between Corro farmhouse and the Sentmenat Thermal. It was the biggest around.</i>	00:03	00:24
1,865	265	On the left there are the ancient St. Miquel dels Arcs (or l'Arn) Chapel ruins, dated already in 1027. Then, we leave a trail on the left and we take the path to the forest, climbing the Torre Roja hill.	00:02	00:26
2,530	305	At a turn to the right by-pass coming from Gorg d'en Pèlags	00:08	00:34
3,170	365	On the left we leave a fork up to the Torre Roja hill, where we can visit an Iberian Village Ruins and from an old surveillance tower where we can enjoy a plain beautiful view. <i>Historical note</i> LA TORRE ROJA <i>Torre Roja's earliest reference comes from year 1529. The original name of this fortified hill was Puig Castellar. In the hill (which rises to 393 m. above sea level) there is a big archaeological site with vestiges from the IV century b.C. to I a.C. Thanks to its location the hill inhabitants controlled perfectly the way through Caldes Stream.</i>	00:08	00:42
3,575	385	Pascol fork. We leave the path on the right. Pascol farmhouse existed already in the 13th century (as "Paschal") and it's called Mas Pascual in 1353 or Mas Pascual de Rovinyó from the 15th century.	00:05	00:47
4,075	390	The path goes up and down slightly. There is a fork leftward to Can Fruitós. After a climb and following curves we arrive to the Català Hill. We take the path, and it makes turn 180° on the right. At this position, we find the PR C48.3 junction -(Setmenat-Gallifa).	00:06	00:53
4,387	385	We leave leftward another path that goes to Pascol, turning left to a tough ascent.	00:04	00:57
4,640	405	We leave a path on the left and an ascent turning to the right.	00:03	01:00

KM	ALTITUDE	DESCRIPTION	PARTIAL	TOTAL
5,565	460	We arrive to a small plane with a good view of the old quarry ruins. We continue forward to the north, leaving a stream on the left side, uphill and curves.	00:08	01:08
5,970	520	The path joins a wider track coming from the right side of Sant Sebastià road. We turn left by this track.	00:07	01:15
6,410	535	The track, after a slight ascent and descent drives us to a road in Guanta residential state, passing near an old destroyed hut. We leave the track to take the path from the right side hill-walking. The path matches with PR-C48 from Gallifa to Sentmenat.	00:08	01:23
6,510	545	We leave the track to take a path on the left, starting just under an oak at Tuies Oak which it stands out because its greatness. Oak Tuies is the name which people from Sentmenat call Son Oak; the name comes from Can Tuies, Sentmenat, where they use to have a vineyard.	00:02	01:25
7,120	695	From the oak way, the path arrives scarcely to the called Serra Llisa Summit once in Farell Mountain. Our way follows a wide path coming from the left and going down. On its right there is a path for the Pic del Vent, the highest point in Farell Mountain, marked as a PR C-9,2 bypass. <i>Historical note</i> LA SERRA LLISSA <i>Serra Llisa is the southern part of Farell summit. It's often said that this is the mountain's point to be firstly snowy.</i> EL FARELL <i>The Farell was a tower near its Montmajor lifts, it's called Farell (from Latin "Pharum" or in diminutive "pharellum") where monitoring was made and they warned of danger with light signals. In a document from year 1065 there is named a place of Barcelona county in which there is an "allodium... Qui afrontat... De meridie in ipsa torre de far... (an allodial that borders south with Farell Tower). A privilege of 1167 from Barcelona Count allows to build up a farmhouse on the mountain's summit ("it ipso Farello", so called already in year 1067).</i>	00:17	01:42
7,625	680	Fork. We leave the path left side and follow St. Sebastià de Montmajor summit.	00:06	01:48
7,755	695	On the right, in the middle of the path, we see the entrance of a small chasm.	00:02	01:50
8,490	695	We arrive to a large plain headed by a big oak where a path on the right coming from Farell guesthouse join us, located on the mountain ridge and visible from all the valley. Between this way and the one that has brought us down a path coming from Pic del Vent and that links the bypass passed on Llisa Mountain. We follow towards St. Sebastià by the left path.	00:08	01:58
8,560	690	Fork; we follow the right.	00:02	02:00
8,835	650	Toward the right and from our way there is a track branching off that go back and down to the Caldes to St. Sebastià road.	00:03	02:03
8,865	645	Fork. We keep toward the right, following the Cargols ridge, so called because the molluscs richness, a bit further down Prat farmhouse mountain near to the way to la Riereta.	00:02	02:05

KM	ALTITUDE	DESCRIPTION	PARTIAL	TOTAL
9,281	620	We arrive to another levelled area, with an holm-oak in the middle. There is a path cross. We take the path on the right side going down directly to Saint Sebastià de Montmajor by a ruined path by water and motorbikes, and with a strong unevenness.	00:10	02:15
9,900	500	We arrive to a path, after leaving on the left Torre del Rellotge which we will follow to the right for reaching our destination to St. Sebastià de Montmajor place. Towards left we follow the PR C-48 we would go to Gallifa Castle.	00:20	02:35
10,085	505	<p>We arrive to Sant Sebastià de Montmajor.</p> <p><i>Apunte històric</i></p> <p>SANT SEBASTIÀ DE MONTMAJOR</p> <p><i>Sant Sebastià de Montmajor is a small village of Caldes de Montbui, already dated from 1098. The allodium bellowed to St. Cugat del Vallès in 1098. St. Sebastià Chappel, Romanesque style has a unique vault barrel nave, without sub-arches, with a wide square apse at the same high, very odd, sticked outside with arcades and Lombard bands. The transept has semicircular absidioles to the north and one lateral to the East, framed by lesenes and arch friezes and blind arches friezes.</i></p> <p><i>Over the crossing lies the bell tower, square floor and two levels, the lower floor with simple windows and the higher floor with double windows. The commemorations in St. Sebastià honour are very ancient and for sure, they had been set for the previous epidemics, because the congregation felt that the martyr had been shot as the person who kept them away the plague. In the past, the celebration was held on January the 20th, but from the thirties, it's celebrated the first of may, the same day as the Labour Day Party.</i></p> <p><i>St. Sebastià Church is because its features one of the Catalonia Romanesque jewels, and it has been chosen for its reproduction in Poble Espanyol in Montjuic.</i></p>	00:10	02:45
10,370	500	We arrive to a path going up to a small reliefs passing through a big esplanade of grass.	00:05	02:50
10,995	545	The path goes to a track from a road, fit for vehicles. We continue toward the left, sloping down the trail.	00:08	02:58
11,266	535	Fork. We keep the same path on the left with a strong descent.	00:02	03:00
11,470	515	<p>We move to the farm side called "El Ginestós" (Can Martin).</p> <p><i>Apunte històric</i></p> <p>EL GINESTÓS</p> <p><i>Ginestós Farm is already dated in 1316 ("mansí Genestos"), and it was known as "Mas Ginestós de la Vila" from 19th century. It was added to St. Sebastià parish church in 1868.</i></p>	00:04	03:04
12,015	460	On the left we find the way coming from St. Sebastià, currently closed.	00:03	03:07
12,420	430	Entrance to Ginestós Farm. After leaving the track that drives us to the farm, we will go away from the main path in order to take a passage on the left.	00:08	03:15
12,610	410	We come back to find the main path and we keep descending.	00:02	03:17

KM	ALTITUDE	DESCRIPTION	PARTIAL	TOTAL
12,831	385	Two new paths come from the left: one from Casa de la Vila (Village Townhall) and the other one from Sant Sebastià. <i>Historical note</i> CASA DE LA VILA <i>The name of the village has been taken from Gallifa parish, as formerly it used to belong to, and since 1565, it was named as "Casa de la Vila" and belonging to St. Sebastià parish since 1868.</i>	00:02	03:19
13,415	335	We cross Elies stream by the current concrete bridge. At the end, when it is plentiful water, it can be observed the Elies pool. We leave at right the wide path that goes from Elies house and comes back to Caldes setting up the PR C-9.1 road, then, we take left. <i>Historical note</i> LES ELIES <i>Elies House is dated already in 1353 ("lo mas de ses Alies dez cabots"). The farm has set the name to the site, the pool and the stream, designated also to Gallifa and Caldes.</i>	00:08	03:27
13,660	335	Going to Elies Pool we pass through some abandoned fields to cross the stream, just in front of the stream.	00:03	03:30
13,720	340	We take the path to the rock in the middle of two streams, by a climbing path and quite weathered.	00:02	03:32
13,840	365	In a very sharp bend, at right, in front of us, we see a path direct to Sant Sebastià marked as PR C-48.2. We follow at right going up.	00:04	03:36
13,970	385	We reach a track, we take left.	00:05	03:41
14,300	410	After leaving a pine forest we arrive to Sta. Maria del Grau Hermitage, where it's also retained an ancient tower and a ruined building	00:04	03:45
14,570	420	A very short distance, arriving to an esplanade by the same way, we will find finally the G.R.-5, where is made a way triangle.	00:05	03:50



Carretera BV-1243 a Sant Sebastià de Montmajor km 0,3

T (34) 938 654 695 • F (34) 938 667 580

08140 Caldes de Montbui

GPS: 41° 38' 39" / 2° 9' 23"

elpasqualet@elpasqualet.com

www.facebook.com/CampingelPasqualet

www.twitter.com/elpasqualet

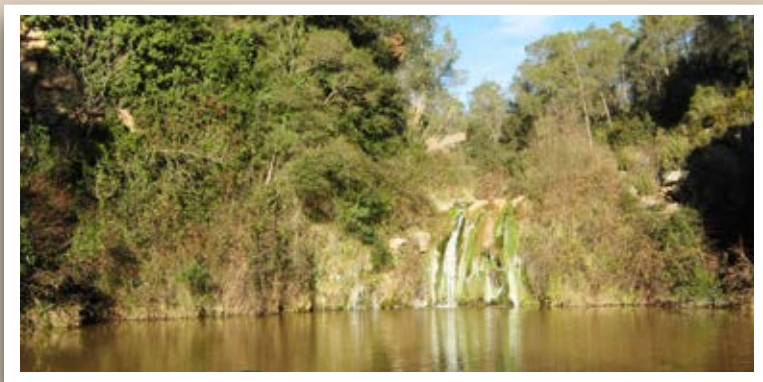
www.elpasqualet.com

OPEN FROM 15 JANUARY TO 15 DECEMBER



PR-C 9.1

It's a circular trail following PR-C 9 bases but it's not necessary to step backward to Caldes. Once we have arrived to the so-called "Gorg de les Elies" through PR-C9, instead of climbing to Sta. Mffi del Grau we can come back to Caldes, along the stream. We will go through Caldes ancient stone quarry. Where, by late nineteen century, thousand of flagstones carried by heavy carriages pulled out by draught oxen to the village train station. They were taken to Barcelona and other places by railway.



Gorg de les Elies

INFO



LENGHT: 6,99 Km



DURATION: 1 h 14 min



ELEVATION GAIN UPHILL: 33 m



ELEVATION GAIN DOWNHILL: 154 m



CIRCULAR ROUTE: NO



ELEVATION MAX: 349 m

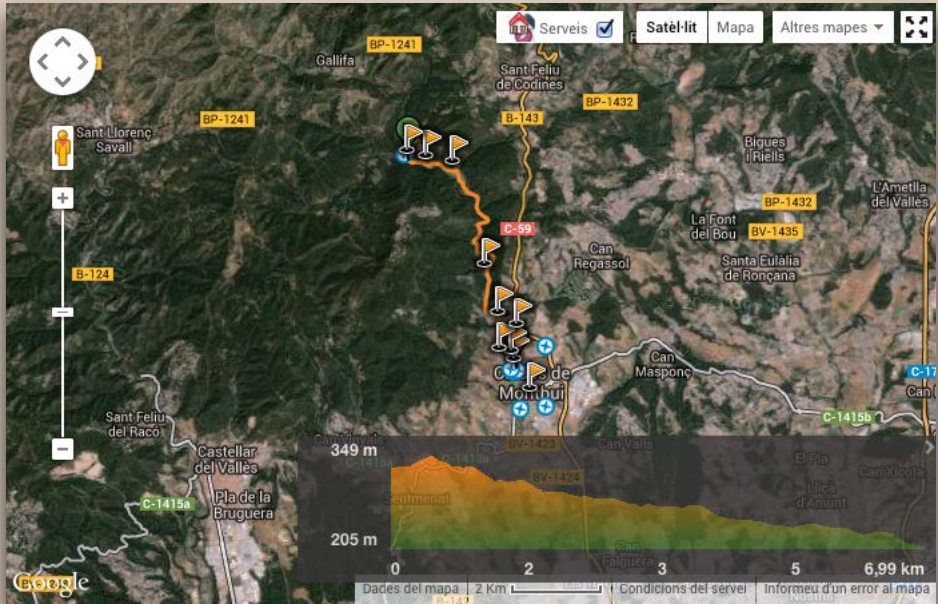


ELEVATION MIN: 205 m



DIFFICULTY: *** (easy)

<http://en.wikiloc.com/wikiloc/view.do?id=1372918>



POINTS OF INTEREST

ERMITA DEL REMEI: 41° 64'14.09" 2,1624250"

CAMPING EL PASQUALET: 41° 64'35.52' 2,1578450"

CASTELLVELL: 41° 65'28.37' 2,1542620"

CASANOVA DE LES ELIES: 41° 67'27.64' 2,1459670"

CADA DE LES ELIES: 41° 67'36.58' 2,1392040"

PONT DE LA RIERA DE CALDES : 41° 67'46.57' 2,1342680"

KM	ALTITUDE	DESCRIPTION	PARTIAL	TOTAL
0,00	335	We cross the Elies Stream and keep the stream course down.	00:00	00:00
0,250	335	We leave the path at left that leads directly up to the El Fonoll Restaurant.	00:04	00:04
0,317	340	Fork. Keep right descending. The path that comes from right drive us to St. Feliu de Codines.	00:01	00:05
0,460	335	We find Elies House at right.	00:03	00:08
1,075	330	At left there is the Elies Casa Nova.	00:08	00:16
1,195	320	Next to a big stone at right, a way starts and it will drive us to a small dam.	00:02	00:18
1,360	310	We cross the torrent following the small stones visible thanks to the small dam that allows us to find again the path.	00:02	00:20
1,410	310	We leave behind a path that comes from the right side and we continue straight.	00:01	00:21
1,690	310	The path forms into a curve at left upwards, but we remain on the way that goes to the south, downward.	00:04	00:25
2,210	290	We quit from the first part of the paving alongside the stream and we get into a woodland, running off the way on the left.	00:08	00:32
2,490	285	We come back to the river-bed and follow by the stones, and always by left side river, for arriving to the canes at our left, there, we will get into a small track.	00:04	00:36
3,110	270	We go across the stream by a small bridge built quite handmade.	00:10	00:46
3,290	265	We find a bridge project structure that it was supposed to cross the stream. We take the starting on the left side of the stream path.	00:03	00:49
3,650	265	We discover on our left side a quite ruined building supposed to be used as accommodation block for ancient quarry workers.	00:06	00:55
4,450	245	On the left side of the path, we notice Castellvell House from the Quarry. We get away the path starting on the right.	00:12	01:07
5,280	230	We arrive to the road from Caldes to St. Sebastià, after walking a part of a path with fruit spurs that use to be the ancient quarry path. We follow the road asphalted to the left.	00:17	01:24
5,680	240	At right, we find the entrance of "El Pasqualet" Camping.	00:04	01:28
5,960	240	We get the road of Caldes to St. Feliu de Codines and turn right to Caldes.	00:04	01:32
6,165	225	At left we observe the Mare de Deu del Remei Hermitage, traditional gathering place for people from Caldes. We keep going down through the Remei boulevard where there is an overall view of Farell Mountain.	00:02	01:34
6,530	220	We take the Remei suburb street at right.	00:04	01:38
6,700	210	We reach the Cargol Square, and passing through it we take Vic Street.	00:03	01:41
6,980	205	Passing ahead of Broquetas Spa gardens, we reach again Font del Lleó Square.	00:03	01:44



Camping El Pasqualet



Carretera BV-1243 a Sant Sebastià de Montmajor km 0,3

T (34) 938 654 695 • F (34) 938 667 580

08140 Caldes de Montbui

GPS: 41° 38' 39" / 2° 9' 23"

elpasqualet@elpasqualet.com

www.facebook.com/CampingElPasqualet

www.twitter.com/elpasqualet

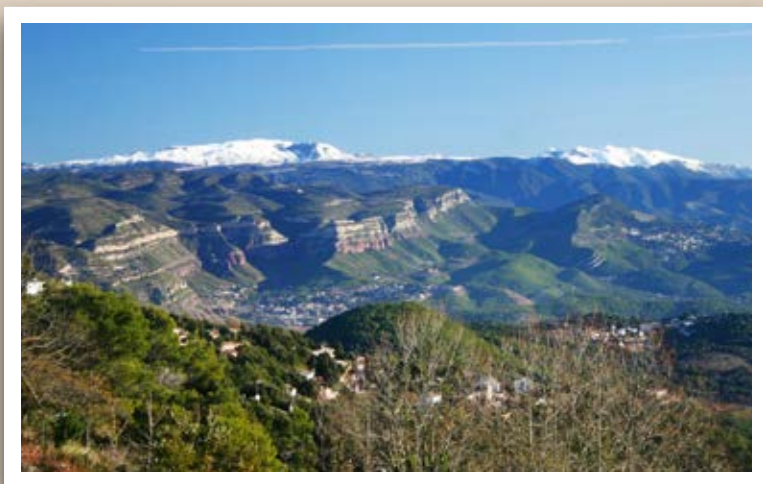
www.elpasqualet.com

OPEN FROM 15 JANUARY TO 15 DECEMBER



PR-C 9.2

PR path that allows to climb to Farrell Mountain's summit. From Serra Llisa viewpoint we climb to find Pic del Vent (815m.) and enjoy of a Vallès and Barcelonès wonderful view, pre-coastal mountains, Montseny hills and, if we look to the western area, Mola and Montcau hills.



Views of Pic del Vent

INFO



LENGHT: 1,74 Km



DURATION: 30 min



ELEVATION GAIN UPHILL: 116 m



ELEVATION GAIN DOWNHILL: 113 m



CIRCULAR ROUTE: NO



ELEVATION MAX: 810 m

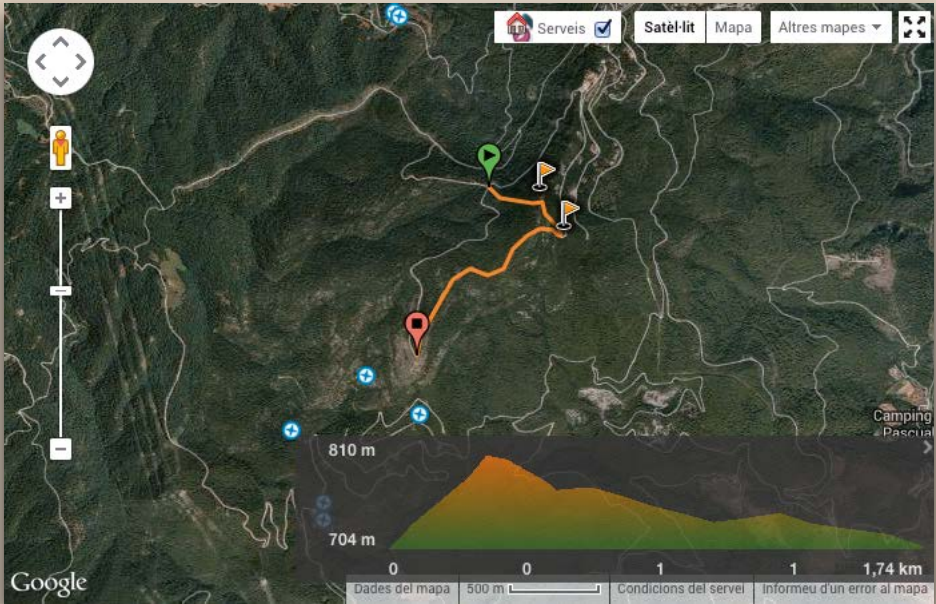


ELEVATION MIN: 704 m



DIFFICULTY: ** (easy)

<http://es.wikiloc.com/wikiloc/view.do?id=1374198>



POINT OF INTEREST

PIC DEL VENT (815M):
41° 6'55.367" 2,1282810"

KM	ALTITUDE	DESCRIPTION	PARTIAL	TOTAL
0,000	695	From Serra Llisa and after being in awe of the el Vallés great views, we can follow right that will drive us to the Serra del Farell highest peak.	00:00	00:00
0,520	730	After going along the path coming from Serra Llisa, we come across a metal deposit at our left... that serves as water store in case of forest fire.	00:07	00:07
1,225	760	Just before arriving to a round small asphalted square, we go forth left by a path up to the rocks, walking out by an antenna facility. Some meters higher the path is clearer.	00:09	00:16
1,425	800	After climbing by the rocks, some tree forest and also with kermes oaks and shrubs, we arrive to a cross, few meters to the summit.	00:06	00:22
1,500	816	It's the Pic del Vent Summit, marked by a geodesic vertex, where we can enjoy an exceptional view.	00:01	00:23
1,510	815	We come back some meters of the way we have done until here, and also by a path at our right, to the west, we go down to find the PR C-9. Beware the path downward because sometimes there is a steeper slope.	00:01	00:24
1,910	695	We get there an esplanade with a big oak in the middle. From the left we notice a path coming from Serra Llisa, and we take there the PR C-9.	00:07	00:31



Carretera BV-1243 a Sant Sebastià de Montmajor km 0,3
T (34) 938 654 695 • F (34) 938 667 580
08140 Caldes de Montbui
GPS: 41° 38' 39" / 2° 9' 23"
elpasqualet@elpasqualet.com
www.facebook.com/CampingelPasqualet
www.twitter.com/elpasqualet
www.elpasqualet.com

OPEN FROM 15 JANUARY TO 15 DECEMBER



GR - 97.2

Starting from a trail promoted by several bodies on the year 1997 that meets Sant Celoni and La Beguda Alta in Abrera. This path mentioned is from GR-97, it is more travelled than the same branch because it goes through Els Lledoners and Can Camp hill. It goes across the village by Font del Lleó square and it takes the Gros Oak to arriving once more to the main branch, at Torre Marimon.



Way to Roure Gros

INFO



LENGTH: 10,02 Km



DURATION: 1 h 47 min



ELEVATION GAIN UPHILL: 197 m



ELEVATION GAIN DOWNHILL: 256 m



CIRCULAR ROUTE: NO



ELEVATION MAX: 364 m

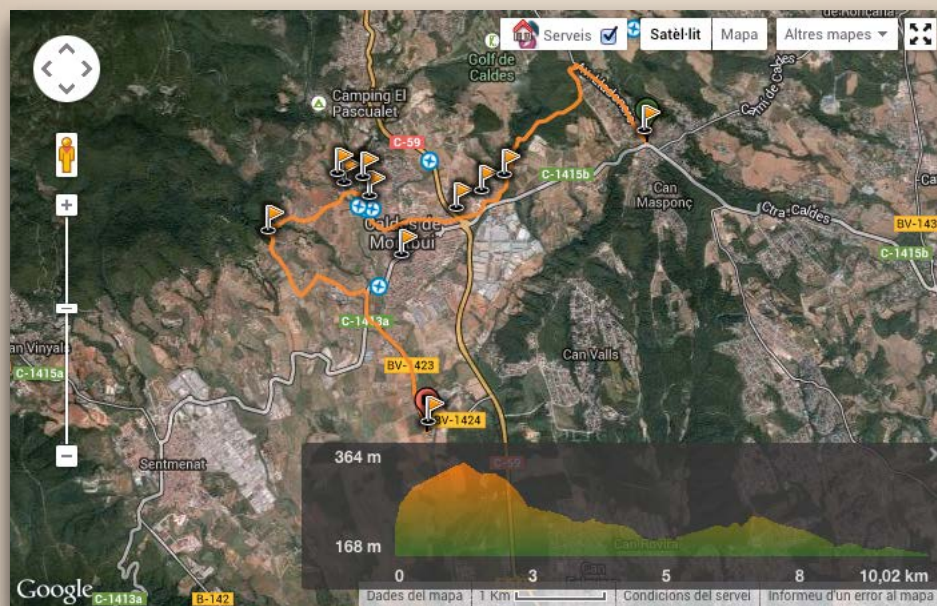


ELEVATION MIN: 168 m



DIFFICULTY: ** (easy)

<http://en.wikiloc.com/wikiloc/view.do?id=1437692>



POINTS OF INTEREST

TORRE MARIMÓN: 41° 612923' 2,1696960''

ROURE GROS: 41° 631179' 2,1490550''

PLAÇA DE LA FONT DEL LLEÓ: 41° 634617' 2,1620480''

PLAÇA DE TAUNNUSTEIN: 41° 635850' 2,1587330''

MAS MANOLO: 41° 635119' 2,1764580''

FONT DE LA BORDA: 41° 636622' 2,1793350''

KM	ALTITUDE	DESCRIPTION	PARTIAL	TOTAL
0,000	290	In GR-97 at Els Lledoners Residential state, it starts GR 97-2 path driving us to Caldes de Montbui, at the PK 12,357 from Franqueses to Caldes in GR-97, Granollers-Caldes road. We take the Lledoners Boulevard, Caldes ancient way highroad, to the north, we ascend to the Golf Course.	00:00	00:00
1,160	345	After walking a good road span, and just before a quite important curve at right, we start a dirt track on the left and that goes into a pines and oaks forest.	00:15	00:15
1,320	350	We get out a path at right and we keep straight down.	00:03	00:18
1,480	340	Leaving a path at right, we arrive nearby to a plot for being urbanised area. Without reaching it we turn right.	00:02	00:20
1,750	330	Path cross. Keep straight.	00:05	00:25
1,780	330	Fork. We go forth the path at left and we follow the right one.	00:01	00:26
1,935	320	We get away the forest track to Can Camp and we keep our path at left.	00:02	00:28
1,995	320	Pass the main way at left and go along moving down at right.	00:01	00:29
2,330	290	Leave the track, round at left and take the other one narrower that goes down straight. Further, the track becomes a path quite sloping and weathered by the water.	00:04	00:33
2,495	260	Can Camp Torrent. Cross the other riverbank and go at left by the path down to Can Camp. Pass by a water small booth and follow by the torrent river-bed.	00:02	00:35
2,935	250	Keep on beside another water booth, at our right, and a plentiful reed swamp at left.	00:07	00:42
3,165	240	The path joins another one coming from the right. Keep going down straight.	00:02	00:44
3,275	230	Under the path, at left, we find Borda Fountain. You are invited to enjoy the freshness of that place with a table and a wall as a bench, rounded by good oaks and holm-oak specimens.	00:01	00:45
3,465	225	Granollers to Caldes road. Just before arriving, we follow by the right by a sidewalk for pedestrian, and some few meters ahead we turn again at right.	00:03	00:48
3,710	230	We go forth right Mas Manolo, ancient residence of the sculpture Manolo Hugué that is being equipping as a museum, and we cross Barcelona — Moià road (C-59) to access to Caldes city centre by Manolo Hugué Street. CALDES DE MONTBUI. Once at Caldes City Center we continue by Granollers Street to Escoles Pies Street, going down to Plaça de l'Angel, Asensi Vega Street to Església Square, at right by Forn Street and to Font del Lleó Square.	00:03	00:51
4,900	205	At historical city centre, here is the G.R. It matches with a span starting in P.R. C-9 (Caldes-Sta Mffi del Grau and link with GR 5). We continue by Broquetas Spa front to find Pont Street.	00:21	01:12
5,124	200	Cross the roman bridge to arrive to the other Caldes stream.	00:03	01:15
5,280	210	At Taunusstein Square (German village matched to Caldes de Montbui), take the left path to Can Picanyol.	00:03	01:18
5,470	220	A path from Pinatar joins us at left.	00:02	01:20

KM	ALTITUDE	DESCRIPTION	PARTIAL	TOTAL
5,575	215	We go forth a cross-street at right and ahead at left, there is Can Picanyol, passing under a high-voltage power station; we walk out towards a forest, among lands and fruit trees.	00:01	01:21
6,000	230	Fork. Follow the path at left.	00:05	01:26
6,200	230	Right and a hard climbing to the forest. We move out left by a path to Escales fountain.	00:02	01:28
6,330	240	Right we get along a path to Pèlags Pool.	00:03	01:31
6,650	250	After a fair climbing we reach a significant way-cross where there use to be Roure Gros (Big Oak). Here we no longer match PR C-9 up to the right path to Torre Roja. The path to Sentmenat to the west is also left and continue at left, to the south, following the mountain's summit among landscape and olive trees by the ancient St. Llorenç Savall-Barcelona highroad.	00:05	01:36
7,295	230	Giramos hacia la izquierda, antes de llegar a la entrada de unas granjas.	00:08	01:44
7,585	230	Giramos a la derecha, siguiendo la misma pista que llevábamos.	00:02	01:46
8,176	195	Dejamos un camino a la izquierda.	00:07	01:53
8,225	190	Llegamos a la carretera de Caldes a Sentmenat, y seguimos un trozo por ella, hacia la derecha.	00:01	01:54
8,475	200	Dejamos la carretera a Sentmenat, y cogemos por la pequeña carretera asfaltada (BV-1243), a la izquierda, que nos llevará hasta la Torre Marimón por el antiguo camino real de Caldes a Palau Solità.	00:03	01:57
9,920	180	Llegamos a la Torre Marimón, antigua Escuela Superior de Agricultura, construida por la Mancomunidad de Cataluña, y en la plaza encontramos el GR - 97.	00:23	02:20



Carretera BV-1243 a Sant Sebastià de Montmajor km 0,3

T (34) 938 654 695 • F (34) 938 667 580

08140 Caldes de Montbui

GPS: 41° 38' 39" / 2° 9' 23"

elpasqualet@elpasqualet.com

www.facebook.com/CampingelPasqualet

www.twitter.com/elpasqualet

www.elpasqualet.com

OPEN FROM 15 JANUARY TO 15 DECEMBER



REMEI TRAIL

It's a local trail, easy and grateful that allows us to walk around by the northern village, going through symbolic places like the Chapel or El Remei Torrent, Dimoni's Fountain arriving to Can Cararac, and going down again quietly to the village. This route is promoted by the Town hall and Trial Friends Association, moderate difficulty and it doesn't go deep into massifs.



Ermita del Remei

INFO



LENGTH: 4,15 Km



DURATION: 49 min



ELEVATION GAIN UPHILL: 72 m



ELEVATION GAIN DOWNHILL: 82 m



CIRCULAR ROUTE: SÍ



ELEVATION MAX: 286 m

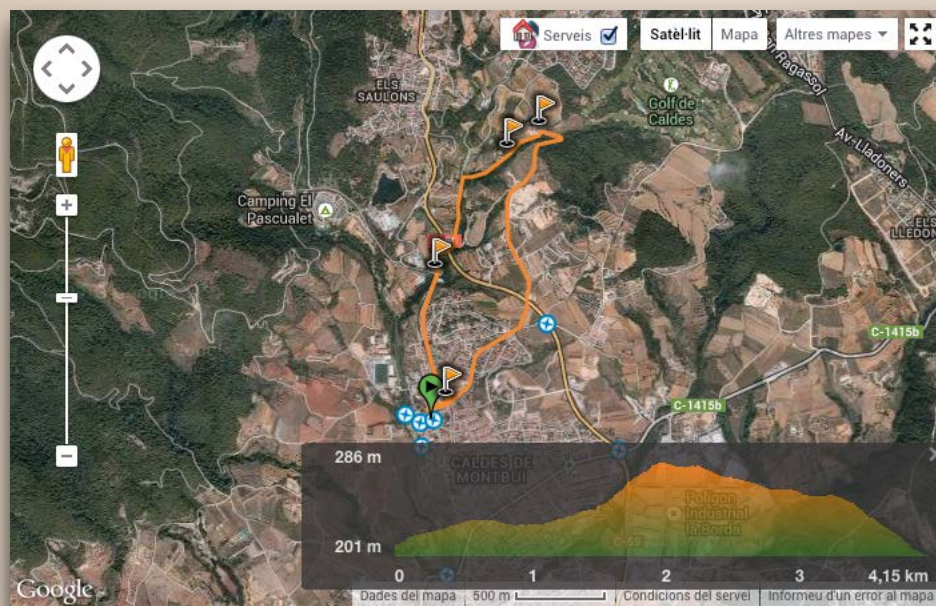


ELEVATION MIN: 201 m



DIFFICULTY: * (easy)

<http://en.wikiloc.com/wikiloc/view.do?id=1437760>



POINTS OF INTEREST

TORRE DE LA PRESÓ: 41° 6'35.174" 2,1631080"
 ERMITA DEL REMEI: 41° 6'41.379" 2,1624260"
 CAN OR JUSSÀ: 41° 6'47.133" 2,1670180"
 CAN CARERAC: 41° 6'48.246" 2,1691400"

KM	ALTITUDE	DESCRIPTION	PARTIAL	TOTAL
0,000	205	Start this tour in Font del Lleó Square. We walk out the square getting along Broquetas Spa at left, we search Bellit Street to Major Street, there, we turn left and go up by Remei Boulevard.	00:00	00:00
0,950	225	We reach Mare de Déu del Remei Hermitage and we follow the dirt track between the restaurant and the church.	00:12	00:12
1,110	230	We find a small tunnel for crossing Barcelona-Moià road.	00:03	00:15
1,240	230	We walk off a path at left. We keep slightly hiking by the main path.	00:02	00:17
1,320	235	Font del Dimoni is at our right.	00:01	00:18
1,470	235	We find a path at left. Keep straight.	00:03	00:21
1,550	240	Remei weir. Way fork, take the right going up to the forest.	00:02	00:23
1,870	265	Leave Mas Or Jusà entrance at left.	00:05	00:28
2,100	280	Mas Can Cararac direction. Continue by the way at right.	00:03	00:31
2,370	280	A path joins at right. Keep straight down by a main path.	00:04	00:35
3,300	250	We reach C-59 road from Barcelona to Moià. If we follow the left we would link to Turó Gros route. By crossing the road, quite carefully, we follow the small path ahead to Bigues Street.	00:13	00:48
3,460	255	We go along Bigues Street at right until Major Street, we will cross it to find Bellit Street and to Font del Lleó Square.	00:03	00:51
4,220	205	Font del Lleó Square.	00:08	00:59



Carretera BV-1243 a Sant Sebastià de Montmajor km 0,3

T (34) 938 654 695 • F (34) 938 667 580

08140 Caldes de Montbui

GPS: 41° 38' 39" / 2° 9' 23"

elpasqualet@elpasqualet.com

www.facebook.com/CampingelPasqualet

www.twitter.com/elpasqualet

www.elpasqualet.com

OPEN FROM 15 JANUARY TO 15 DECEMBER



TURÓ GROS TRAIL

Este es un sendero más largo y con más desnivel que el anterior. Orientado hacia la parte este del sendero que se mueve por el este de la población, de gran riqueza paisajística, con grandes bosques, fuentes, rieras, etc.



Pine nut

INFO



LENGTH: 7,24 Km



DURATION: 1 h 25 min



ELEVATION GAIN UPHILL: 164 m



ELEVATION GAIN DOWNHILL: 164 m



CIRCULAR ROUTE: SÍ



ELEVATION MAX: 351 m

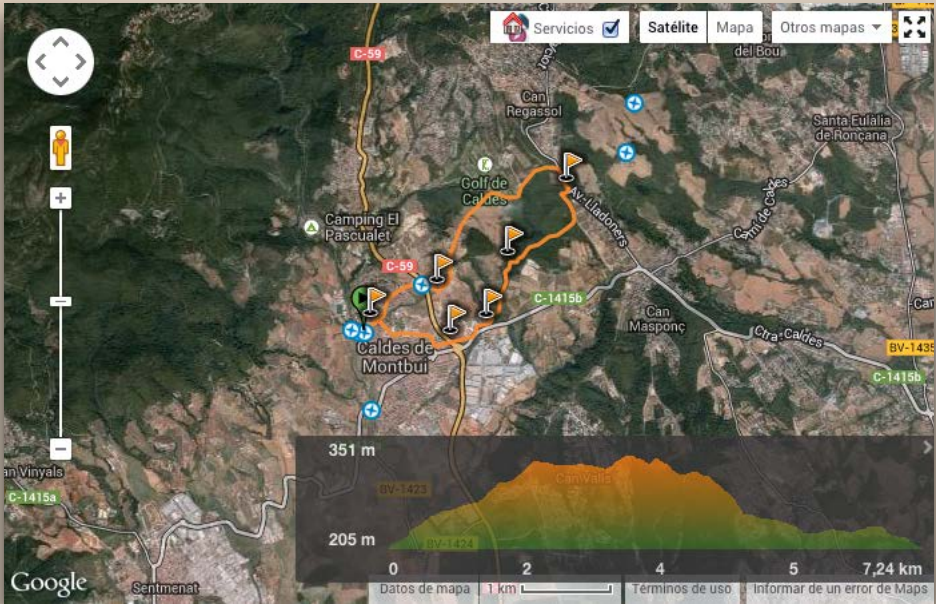


ELEVATION MIN: 205 m



DIFFICULTY: * (easy)

<http://en.wikiloc.com/wikiloc/view.do?id=1437772>



POINTS
OF INTEREST

- TORRE DE LA PRESÓ: 41° 6'35.174" 2,1631080"
- TORRENT DE CAN CAMP: 41° 6'41.047" 2,1807830"
- MAS MANOLO: 41° 6'35.119" 2,1764580"
- FONT DE LA BORDA: 41° 6'36.622" 2,1793350"

KM	ALTITUDE	DESCRIPTION	PARTIAL	TOTAL
0,000	205	We leave Font del Lleó Square and we track Bellit and Bigues Streets to find C-59 Barcelona-Moià road.	00:00	00:00
0,900	260	We cross the road and go straight by the street to Caldes cemetery.	00:11	00:11
1,115	265	We pass the entrance at right and hike by the left path.	00:04	00:15
1,365	285	We go away right to Can Camp and keep climbing to the main path.	00:04	00:19
1,530	305	We leave the right path.	00:03	00:22
1,820	315	We keep straight. We leave another path at right.	00:05	00:27
2,163	335	After reaching the plain, we pass a path at left and, at the end, we see the Golf course facilities.	00:05	00:32
2,380	330	We move out after a water booth and a power station on the right.	00:03	00:35
2,790	335	Prat de Can Camp. An asphalted road goes up at left side at the Golf Course facilities entrance. Keep the path at right.	00:06	00:41
3,265	355	We get there an asphalted road that we take at right. It is the Ancient Way from Caldes to Saint Eulàlia.	00:07	00:48
3,515	345	We get along the asphalted road and turn right. We match also with the GR 97-2 road until Caldes access, and that's why we will find also the way marked with red and whites signs.	00:03	00:51
3,675	350	We get out the right path and we keep straight down.	00:03	00:54
3,835	340	Leaving a path at right we arrive close to a plot for being urbanised area. Without reaching it we turn right.	00:02	00:56
4,150	330	Fork. We go forth the left path and we continue at right.	00:06	01:02
4,305	320	We get off a forest track to Can Camp and take another path at left.	00:02	01:04
4,365	320	Pass the main path at left and go along moving down by the right.	00:01	01:05
4,700	290	Quit the track, round at left and take the other one narrower that goes down straight. Further, the track becomes a path quite sloping and weathered by the water.	00:04	01:09
4,865	260	Can Camp Torrent. You cross the other riverbank and go on the left by the path down to Can Camp. Pass by a water small booth and follow by the torrent river-bed.	00:04	01:13
5,305	250	Keep on beside another water booth and at our right and a plentiful reed swamp at left.	00:07	01:20
5,535	240	The path joins another one coming from the left. Keep straight on going down.	00:02	01:22
5,645	230	We find Borda Fountain at left side. You are invited to enjoy the freshness of that place with a table and a wall as a bench, rounded by good oaks and holm-oak specimens.	00:01	01:23

KM	ALTITUDE	DESCRIPTION	PARTIAL	TOTAL
5,835	225	Granollers to Caldes road. Just before arriving we follow by the right by a sidewalk for pedestrian, and some few meters ahead we turn right again.	00:03	01:26
6,080	230	We go forth right Mas Manolo, ancient residence of the sculpture Manolo Hugué that is being equipping as a museum, and we cross Barcelona to Moià road (C-59) to access to Caldes city centre by Manolo Hugué Street.	00:03	01:29
6,300	230	Manolo Hugué Street drives us to Fontcuberta Boulevard where we leave behind GR-97.2 and follow Ramon i Cajal Street. We take Balmes street to Bigues Street which will take us to Major Street.	00:04	01:33
7,300	205	We cross Major Street and go down by Bellit Street and we will arrive to Font del Lleó Square.	00:12	01:45



Carretera BV-1243 a Sant Sebastià de Montmajor km 0,3

T (34) 938 654 695 • F (34) 938 667 580

08140 Caldes de Montbui

GPS: 41° 38' 39" / 2° 9' 23"

elpasqualet@elpasqualet.com

www.facebook.com/CampingElPasqualet

www.twitter.com/elpasqualet

www.elpasqualet.com

OPEN FROM 15 JANUARY TO 15 DECEMBER



“EL MORRO DE PORC I ELS FORNS DE CALÇ”

This path, created on last year 2002, visits our more exceptional viewpoints of Caldes environment: Casuc Hill. This hill is over Morro de Porc, from we have a wonderful view with panorama of Sant Feliu de Codines, Montseny and Cingles de Bertí. The route goes close to ancient ruins of lime kilns situated in Farell Mountain.



Old lime kiln

INFO



LENGHT: 16,97 Km



DURATION: 2 h 52 min



ELEVATION GAIN UPHILL: 496 m



ELEVATION GAIN DOWNHILL: 525 m



CIRCULAR ROUTE: NO



ELEVATION MAX: 600 m

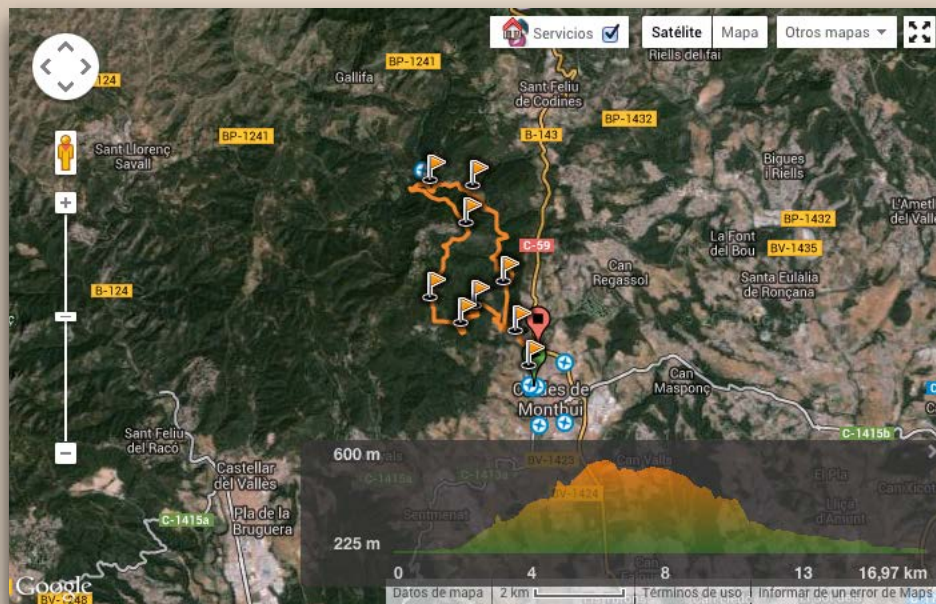


ELEVATION MIN: 225 m



DIFFICULTY: *** (moderate)

<http://en.wikiloc.com/wikiloc/view.do?id=712935>



POINTS OF INTEREST

CORRIOL: 41° 644728' 2,1433420"
 TURÓ DEL CASSUC: 41° 663847' 2,1448450"
 EL CASSUC VELL: 41° 672108' 2,1355750"
 FONT DEL REI: 41° 671185' 2,1465610"
 EL CASTELLVELL: 41° 652837' 2,1542620"

KM	ALTITUDE	DESCRIPTION	PARTIAL	TOTAL
0,000	205	We start from Font del Lleó, Vic street, Marquès de Caldes Square (or Cargol Square –snail square-), Raval del Remei, Remei Avenue until the hermitage. We follow the road to Sant Feliu de Codines, and after, on the left, we take the road to Sant Sebastià.	00:00	00:00
1,300	240	Passing by Camping Pasqualet, we keep the roadway crossing the Pascol Bridge. After the bridge we take the path at right to Torre Nova.	00:15	00:15
2,100	300	We follow the forest track, which starts rising slightly. Approximately 300 meters further we find a crossing of three paths and it is necessary to choose that one of the right, initially it is flat but just afterwards we will find that it starts going up.	00:03	00:18
3,200	360	In the curve at right there is the start of a path on the left that goes slightly down and it has to be followed. A bit further between the trees, on our left side there is Torre Nova.	00:22	00:40
3,900	370	We turn off by a path on the right that slopes upwards between the pines, just when the track that we follow starts descending, after a bend on the right.	00:10	00:50
4,300	430	We follow the wider path on the right. Do not take the one on the left.	00:05	00:55
4,500	440	We find olive trees while we keep climbing and we arrive to a shack on the right, to the named Guerxo Vineyard. Few steps up we will see a beautiful view of Torre Nova and Cingles de Bertí on the back.	00:05	01:00
4,900	450	We arrive to the Farell new road, and we cross it and take the path just starting before. Just some meters after the path should be taken on the right climbing under the masts of an electric power line. CAUTION, the path is not quite visible.	00:05	01:05
5,300	530	We arrive to the top of the hill, on the right there is a beautiful viewpoint, we keep forward to the electric power line. The path keeps up and down following the edge of the mountain.	00:10	01:15
6,100	560	We reach Farell old road. We continue the road 50 metres approx. On the left and before the curve we reach a track on the right, following again the electric power line.	00:15	01:30
6,500	600	The path is slightly easier, just at a trail up on the right (coming from FORNS DE CALÇ –lime ovens- downwards). The electric power line runs parallel to the path that must be followed although it is not quite trod. There is a path to be passed by on the left more marked.	00:10	01:40
6,900	605	We follow the line of the electric power transmission line until crossing the telephone supply line. We descend the paved road, and we continue on the left. Some meters on the right there is a forest track closed with a chain that we follow to the Morro de Porc.	00:10	01:50
7,500	580	After the chain, the track goes slightly down before arriving to a sharp bend on the right, on the left side of the track, we see ruins of two old ice wells. We are just on top of the Morro de Porc.	00:05	01:55
8,200	580	Casac Hill. Excellent view: a bright day we see almost the coastline and the Pyrenees. We follow the descending track.	00:15	02:10

KM	ALTITUDE	DESCRIPTION	PARTIAL	TOTAL
9,800	490	We leave the wide track and we take a path on the right, descending with a strong unevenness. This path can be followed by the white painted signals. The forest track starts to climb slightly.	00:20	02:30
10,200	440	The track becomes wider further on the right.	00:10	02:40
10,600	450	The path ends in a round glade, and we take the starting point of a path just in front of us. Les Helles House can already be distinguished downwards.	00:10	02:50
10,800	450	We leave a dried torrent and we take the path on the left, descending by the side of a ruined house, always with the torrent at our left side without ever crossing it.	00:05	02:55
11,400	325	Les Elles House. We cross Caldes stream and we find a wide track passing by the house side. We keep the right. From this point, it has to be followed the PR C-91 white and yellow marks taking us to Caldes.	00:10	03:05
12,800	310	After leaving a farm house on our left, we turn to the path on the right, beside a very big stone.	00:15	03:20
13,700	280	We go along the edge of the stream, sometimes passing across it.	00:15	03:35
15,500	245	On the left of the path there is Castellvell de la Pedrera house, a bit further on, the path is covered by cobbles, because it was the ancient way to the quarry.	00:30	04:05
16,700	240	Reaching the Caldes road to Sant Sebastià, we follow it on the left and come back by the Camping el Pasqualet side, and now we only need to come back by the same returning way.	00:20	04:25
17,900	205	After descending by the Remei Avenue, Marqués de Caldes Square (or Cargol Square), Vic Street, we arrive again to the Font del Lleó Square.	00:20	04:45



Carretera BV-1243 a Sant Sebastià de Montmajor km 0,3

T (34) 938 654 695 • F (34) 938 667 580

08140 Caldes de Montbui

GPS: 41° 38' 39" / 2° 9' 23"

elpasqualet@elpasqualet.com

www.facebook.com/CampingelPasqualet

www.twitter.com/elpasqualet

www.elpasqualet.com

OPEN FROM 15 JANUARY TO 15 DECEMBER



THE SOURCES

Just out of Caldes to the west, we leave first Gorg d'en Pèlags and its spring, right after Falsa Fountain and Noeretes Fountain, down Guanta to Font del Bou, back to Caldes through Torre Roja Iberian village, leaving Xec and Escales Fountains. This trail goes by half a dozen fountains, some of them very lost, the drop is high and part of this trail is repeated coming and going.



Gorg d'En Pèlags

INFO



LENGTH: 15,07 Km



DURATION: 2 h 47 min



ELEVATION GAIN UPHILL: 512 m



ELEVATION GAIN DOWNHILL: 587 m



CIRCULAR ROUTE: NO



ELEVATION MAX: 551 m

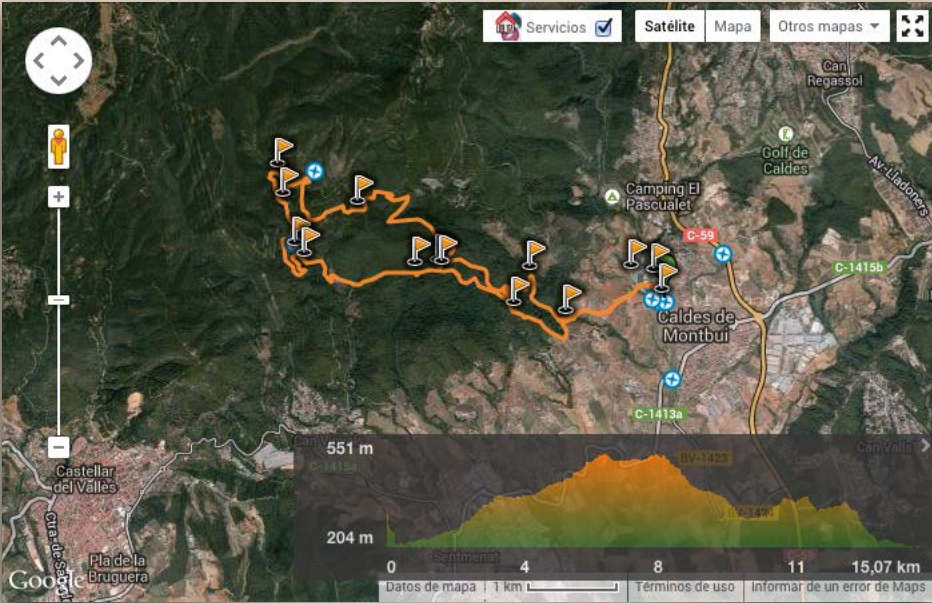


ELEVATION MIN: 204 m



DIFFICULTY: *** (moderate)

<http://en.wikiloc.com/wikiloc/view.do?id=712945>



KM	ALTITUDE	DESCRIPTION	PARTIAL	TOTAL
0,000	205	We leave Font del Lleó Square, following the same walk as the PR C9, taking the Pont Street, by the backside of Broquetas Hotel Spa.	00:00	00:00
0,224	200	The Romanesque bridge is crossed, passing to the other side of the Caldes Stream.	00:03	00:03
0,380	210	At Taunusstein Square we take on the left path to Can Picanyol, following the PR C9 marks.	00:03	00:06
0,570	220	A path joins us on the left, coming from el Pinatar.	00:02	00:08
0,675	215	We leave a crossing on the right, and further on we leave Can Picanyol at left side.	00:01	00:09
1,100	230	Crossing. We continue by the trail coming from the left.	00:05	00:14
1,300	230	The trail takes us to a wider path that we take on the right, in a strong climbing. Before the path going down to the Escalles Fountain, we take the way back.	00:02	00:16
1,430	240	We arrive to a small bench where we leave temporally the PR to continue the path on the right, to Gorg d'en Pèlags. It is marked with white points.	00:03	00:19
1,610	260	We take the path from the left, flatter than the one climbing on the right.	00:03	00:22
1,790	250	We cross by the stream going down to Gorg d'en Pèlags.	00:03	00:25
1,925	270	We leave the path that goes flat and we take a small trail on the left.	00:05	00:30
2,085	285	Small bench and glade. Before us the gorg d'en pèlags with the waterfall, and on the left the GORG SPRING. We take the path climbing by the stones and go over the spring. IT IS IMPORTANT TO NOT TO LEAVE THE PATH BECAUSE THE SHOOTING RANGE IS NEARBY.	00:04	00:34
2,150	305	We take again the path on the left to arrive to a glade by a flat and wide path.	00:02	00:37
2,300	305	We take up again the path following the PR, and we go up by the right. We follow the PR yellow and white marks and the main path, we reach Collet del Català.	00:02	00:39
3,850	390	Once in Collet del Català we take the first path on the right, to St. Sebastià by the PR C9.	00:23	01:02
4,165	385	Passing at right by a path to Pascol, we turn left with a tough ascent and always following the PR.	00:04	01:06
5,745	520	The path goes by a wide track coming from the right side of the St. Sebastià road. We turn left by this track.	00:29	01:35
6,185	535	After arriving to a crossing where we will leave the PR C9 that on the right would climb to St. Sebastià by Pic del Vent Hill, and we go on straight on by the same track to Sentmenat by the PR C48.	00:07	01:42
6,270	530	Después de pasar una cadena llegamos a un cruce de calles sin pavimentar pertenecientes a la urbanización de Guanta. Seguimos por el que sale justo enfrente de nosotros, sin dejar las marcas del PR C48.	00:02	01:44

KM	ALTITUDE	DESCRIPTION	PARTIAL	TOTAL
6,570	505	We leave the PR that goes by the left and we go up by the one on the right.	00:04	01:48
7,895	520	On the right side of the path we can observe some stones with travertine remains and just after a track climbing up to FONT FALSA, which is 50 m away from the path.	00:17	02:05
7,995	505	The residential area way ends and we keep by the track on the left, to Guanta stream, just after we will cross. We follow the yellow and white marks now from the PR C48.	00:24	02:09
8,340	440	We cross again, twice, the mountain stream.	00:09	02:18
8,415	435	FONT DE LES NOERETES. The path takes us to this fountain, generally with considerable flow. We continue by the marked path on the left.	00:03	02:21
8,500	430	We walk out to a residential area downwards to the right.	00:05	02:26
8,920	405	Guanta's House is on our left. We keep going down by the main track.	00:05	02:31
9,465	380	BEWARE!! After passing two paths on the right from the Guanta's House we take the track on the left, it is not quite visible. We do not follow the PR marks anymore.	00:07	02:38
9,905	330	The track brings us to the valley to reach again the stream of Guanta, but before we find an ancient lime oven and just after it, we reach the Guanta's waterfall underneath.	00:10	02:48
10,005	325	We walk along a bit by the stream bed, usually dry or with little water and just after we reach a path on the left.	00:03	02:51
10,045	330	We take the path on the right, downwards.	00:03	02:54
10,150	305	We cross the waterfall and we arrive to FONT DEL BOU.	00:02	02:56
10,245	305	We leave the path on the left.	00:03	02:59
10,605	310	We come to a landscape and we go first to the left and some metres forward we turn by the path on the right, between some olive trees.	00:03	03:02
10,970	310	Before arriving to Can Senosa House, we take a track that climbs to the left side.	00:06	03:08
11,280	365	We get a wide track and go to the right.	00:07	03:15
11,385	370	We are at Pla de les Absoltes, and take the left path following the PR C48,3 marks, to Can Fruïtòs Mountain.	00:02	03:17
11,735	370	FONT DEL XEC detour is on the right, 50 m under the path. We go by the main path.	00:06	03:23
11,985	390	We are again at Collet del Català and we get the path to Caldes following the PR C9.	00:03	03:26
12,885	370	After leaving the path to Pascol we find on the right a path to Torre Roja. We stop following the PR C9 marks.	00:13	03:39
13,265	375	After finding an Iberian village ruins we arrive to Torre Roja from where we can enjoy a great view. We go down to Caldes by a track coming behind the tour.	00:05	03:44

KM	ALTITUDE	DESCRIPTION	PARTIAL	TOTAL
13,755	275	We arrive to a wide track and continue always downwards reaching the ancient Roure Gros (Big Oak).	00:08	03:52
14,105	235	In a sharp curve to the left we take a track on the right, quite hidden, that take us to a stairs going down.	00:05	03:57
14,185	220	FONT DE LES ESCALES.	00:04	04:01
14,235	230	We go out from a crossway and take the first fatter face to us. It is the same where we started the tour.	00:02	04:03
15,585	205	Following this path we arrive again to the first houses of Caldes by the soccer field and from here to the Lleó fountain, the end of the route.	00:16	04:19



Carretera BV-1243 a Sant Sebastià de Montmajor km 0,3

T (34) 938 654 695 • F (34) 938 667 580

08140 Caldes de Montbui

GPS: 41° 38' 39" / 2° 9' 23"

elpasqualet@elpasqualet.com

www.facebook.com/CampingelPasqualet

www.twitter.com/elpasqualet

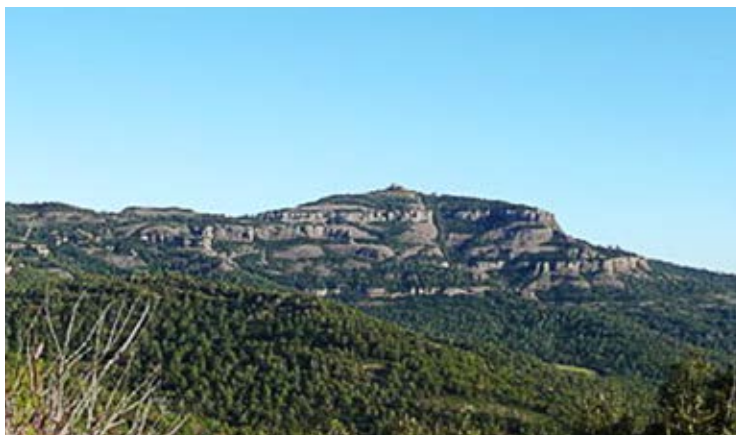
www.elpasqualet.com

OPEN FROM 15 JANUARY TO 15 DECEMBER



3 MOUNTAINS TRAIL

3 Mountains is the trail route that meets natural parks of Montseny, Sant Llorenç del Munt and Montserrat through a marked route divided in 6 stages. Along 106 km. (65.8 miles) we will discover impressive succession of changing nature shapes: everlasting noiseless Montseny, Sant Llorenç i l'Obac wild and rough, magic capricious on edge of Montserrat reliefs will be shown.



La Mola mountain, located at natural park of Sant Llorenç

INFO



LENGTH: 110,35 Km



DURATION: 6 days



ELEVATION GAIN UPHILL: 4.820 m



ELEVATION GAIN DOWNHILL: 4.750 m



CIRCULAR ROUTE: NO



ELEVATION MAX: 1.268 m

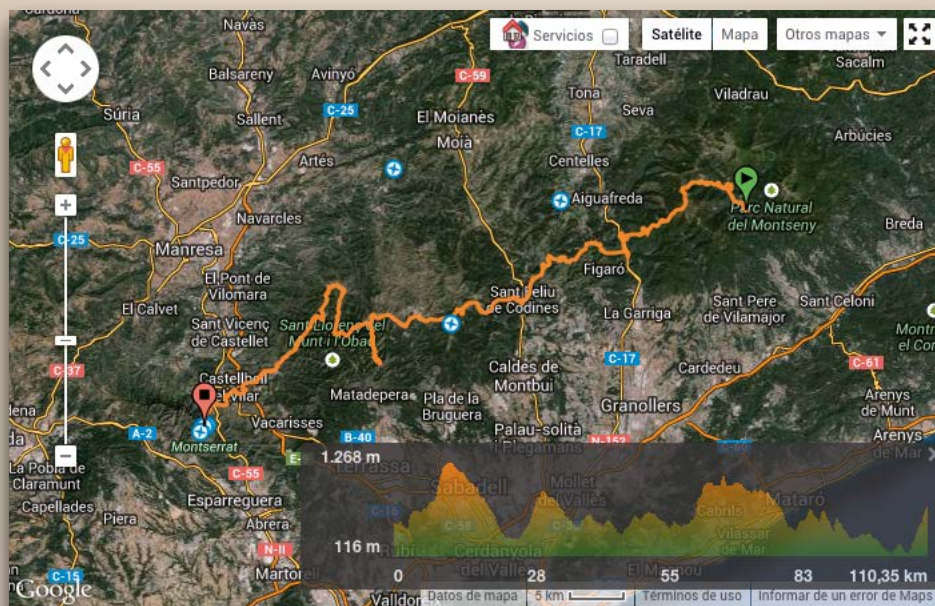


ELEVATION MIN: 116 m



DIFFICULTY: ***** (long distance route)

<http://www.els3monts.cat>



Carretera BV-1243 a Sant Sebastià de Montmajor km 0,3

T (34) 938 654 695 • F (34) 938 667 580

08140 Caldes de Montbui

GPS: 41° 38' 39" / 2° 9' 23"

elpasqualet@elpasqualet.com

www.facebook.com/CampingelPasqualet

www.twitter.com/elpasqualet

www.elpasqualet.com

OPEN FROM 15 JANUARY TO 15 DECEMBER