











# TURÓ GROS TRAIL

Este es un sendero más largo y con más desnivel que el anterior. Orientado hacia la parte este del sendero que se mueve por el este de la población, de gran riqueza paisajística, con grandes bosques, fuentes, rieras, etc.

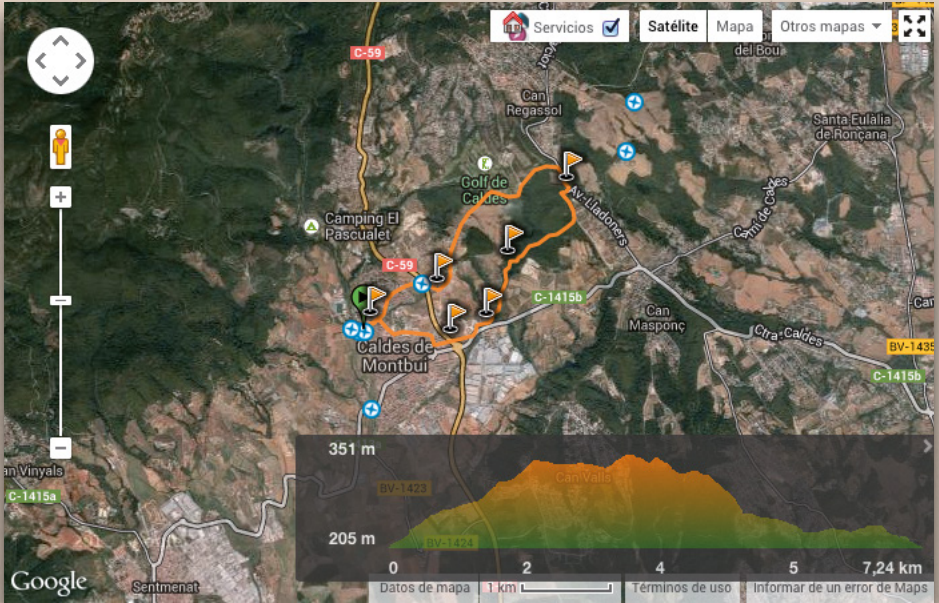


*Pine nut*

INFO

-  **LENGTH:** 7,24 Km
-  **DURATION:** 1 h 25 min
-  **ELEVATION GAIN UPHILL:** 164 m
-  **ELEVATION GAIN DOWNHILL:** 164 m
-  **CIRCULAR ROUTE:** SÍ
-  **ELEVATION MAX:** 351 m
-  **ELEVATION MIN:** 205 m
-  **DIFFICULTY:** \* (easy)

<http://en.wikiloc.com/wikiloc/view.do?id=1437772>



## POINTS OF INTEREST

TORRE DE LA PRESÓ:  $41^{\circ} 635174' 2,1631080''$   
TORRENT DE CAN CAMP:  $41^{\circ} 641047' 2,1807830''$   
MAS MANOLO:  $41^{\circ} 635119' 2,1764580''$   
FONT DE LA BORDA:  $41^{\circ} 636622' 2,1793350''$



KM	ALTITUDE	DESCRIPTION	PARTIAL	TOTAL
0,000	205	We leave Font del Lleó Square and we track Bellit and Bigues Streets to find C-59 Barcelona-Moià road.	00:00	00:00
0,900	260	We cross the road and go straight by the street to Caldes cemetery.	00:11	00:11
1,115	265	We pass the entrance at right and hike by the left path.	00:04	00:15
1,365	285	We go away right to Can Camp and keep climbing to the main path.	00:04	00:19
1,530	305	We leave the right path.	00:03	00:22
1,820	315	We keep straight. We leave another path at right.	00:05	00:27
2,163	335	After reaching the plain, we pass a path at left and, at the end, we see the Golf course facilities.	00:05	00:32
2,380	330	We move out after a water booth and a power station on the right.	00:03	00:35
2,790	335	Prat de Can Camp. An asphalted road goes up at left side at the Golf Course facilities entrance. Keep the path at right.	00:06	00:41
3,265	355	We get there an asphalted road that we take at right. It is the Ancient Way from Caldes to Saint Eulàlia.	00:07	00:48
3,515	345	We get along the asphalted road and turn right. We match also with the GR 97-2 road until Caldes access, and that's why we will find also the way marked with red and whites signs.	00:03	00:51
3,675	350	We get out the right path and we keep straight down.	00:03	00:54
3,835	340	Leaving a path at right we arrive close to a plot for being urbanised area. Without reaching it we turn right.	00:02	00:56
4,150	330	Fork. We go forth the left path and we continue at right.	00:06	01:02
4,305	320	We get off a forest track to Can Camp and take another path at left.	00:02	01:04
4,365	320	Pass the main path at left and go along moving down by the right.	00:01	01:05
4,700	290	Quit the track, round at left and take the other one narrower that goes down straight. Further, the track becomes a path quite sloping and weathered by the water.	00:04	01:09
4,865	260	Can Camp Torrent. You cross the other riverbank and go on the left by the path down to Can Camp. Pass by a water small booth and follow by the torrent river-bed.	00:04	01:13
5,305	250	Keep on beside another water booth and at our right and a plentiful reed swamp at left.	00:07	01:20
5,535	240	The path joins another one coming from the left. Keep straight on going down.	00:02	01:22
5,645	230	We find Borda Fountain at left side. You are invited to enjoy the freshness of that place with a table and a wall as a bench, rounded by good oaks and holm-oak specimens.	00:01	01:23

KM	ALTITUDE	DESCRIPTION	PARTIAL	TOTAL
5,835	225	Granollers to Caldes road. Just before arriving we follow by the right by a sidewalk for pedestrian, and some few meters ahead we turn right again.	00:03	01:26
6,080	230	We go forth right Mas Manolo, ancient residence of the sculpture Manolo Hugué that is being equipping as a museum, and we cross Barcelona to Moià road (C-59) to access to Caldes city centre by Manolo Hugué Street.	00:03	01:29
6,300	230	Manolo Hugué Street drives us to Fontcuberta Boulevard where we leave behind GR-97.2 and follow Ramon i Cajal Street. We take Balmes street to Bigues Street which will take us to Major Street.	00:04	01:33
7,300	205	We cross Major Street and go down by Bellit Street and we will arrive to Font del Lleó Square.	00:12	01:45



Carretera BV-1243 a Sant Sebastià de Montmajor km 0,3

T (34) 938 654 695 • F (34) 938 667 580

08140 Caldes de Montbui

GPS: 41° 38' 39" / 2° 9' 23"

[elpasqualet@elpasqualet.com](mailto:elpasqualet@elpasqualet.com)

[www.facebook.com/CampingElPasqualet](http://www.facebook.com/CampingElPasqualet)

[www.twitter.com/elpasqualet](http://www.twitter.com/elpasqualet)

[www.elpasqualet.com](http://www.elpasqualet.com)

OPEN FROM 15 JANUARY TO 15 DECEMBER